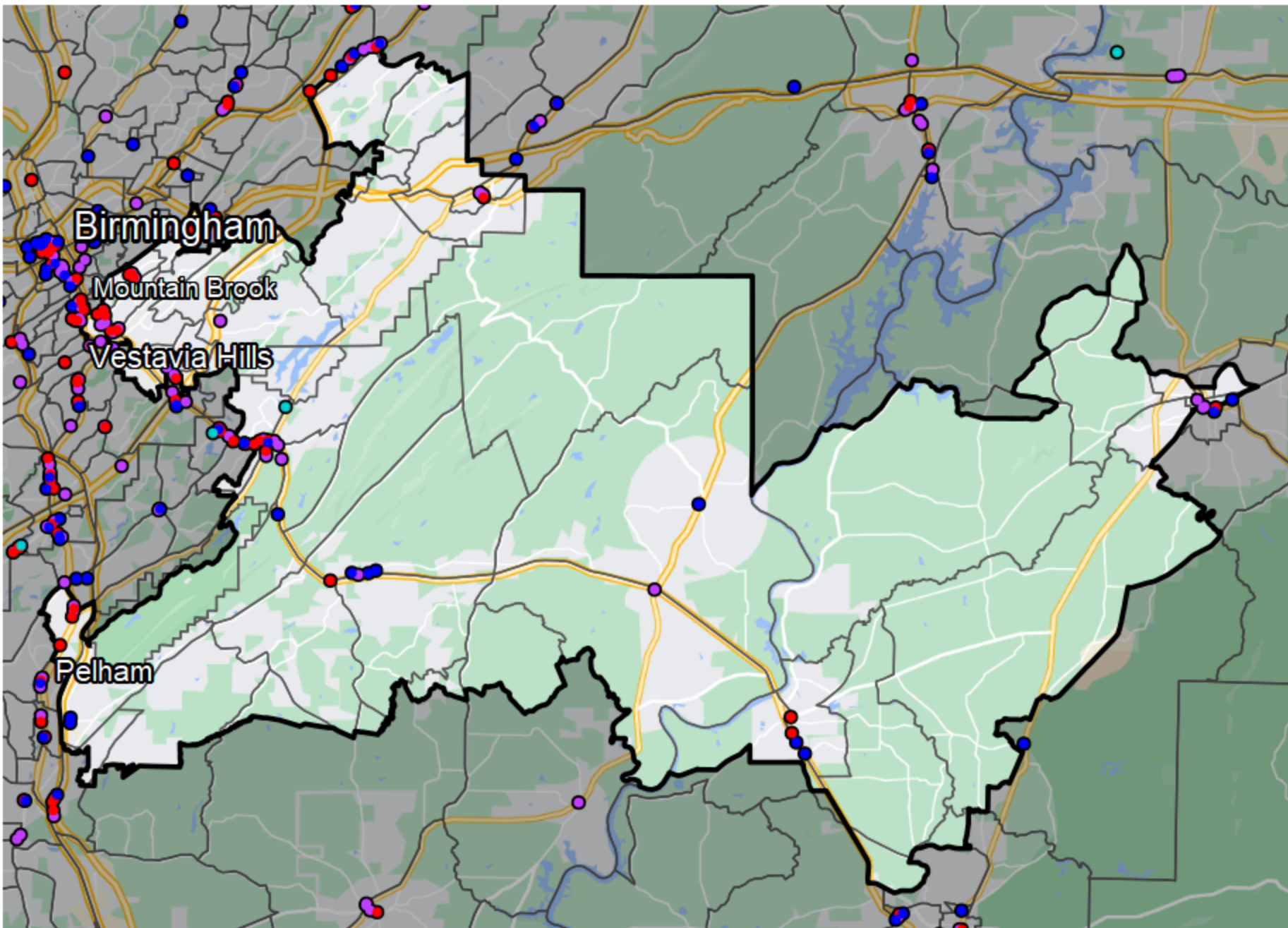


Alabama - State Senate District 15



Financial Institutions

- Bank: 34
- Bank, Out-of-State: 25
- Credit Union: 12
- Credit Union, Out-of-State: 1

Banking Desert

- No Branches within 10 Miles of Population Center

Sources: NCUA, FDIC, UW-Madison Population Lab, CDFI, US Census, Google Maps, CUNA