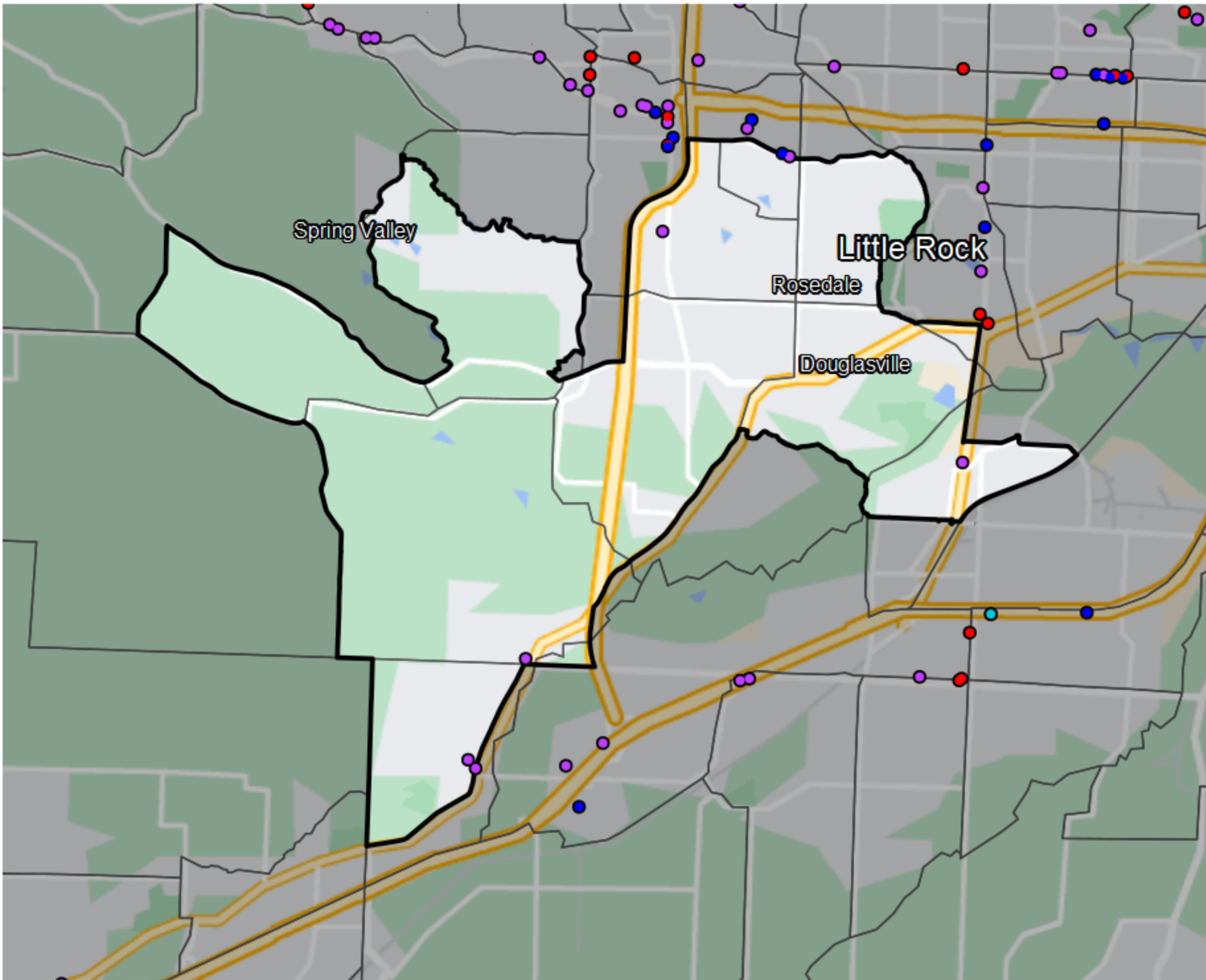


Arkansas - State House District 30



- Banking Desert**
- No Branches within 10 Miles of Population Center
- Financial Institutions**
- Bank: 4
 - Bank, Out-of-State: 0
 - Credit Union: 0
 - Credit Union, Out-of-State: 0

Sources: NCUA, FDIC, UW-Madison Population Lab, CDFI, US Census, Google Maps, CUNA