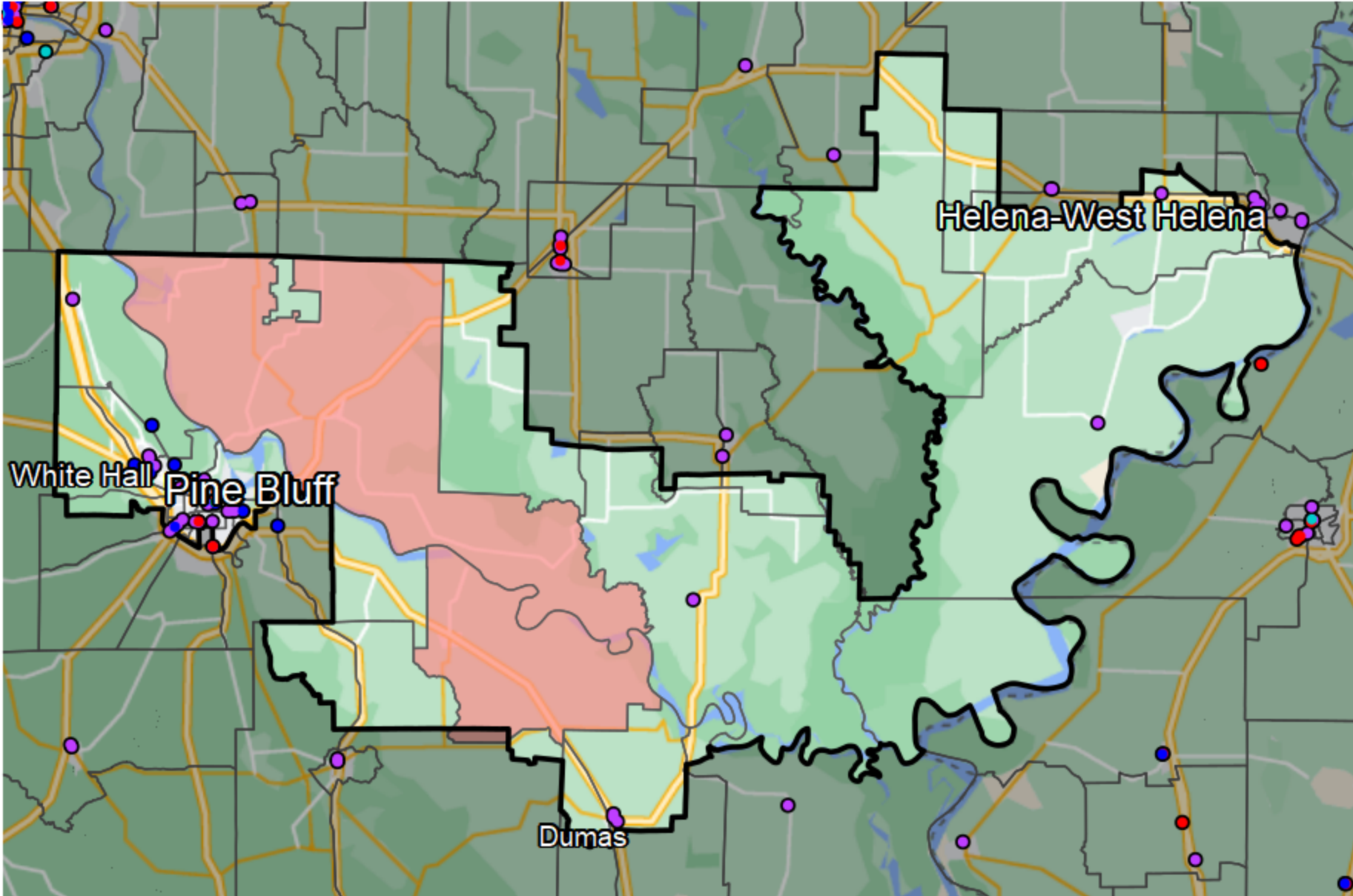


## Arkansas - State Senate District 25



### Banking Desert

No Branches within 10 Miles of Population Center

### Financial Institutions

- Bank: 28
- Bank, Out-of-State: 2
- Credit Union: 8
- Credit Union, Out-of-State: 1

Sources: NCUA, FDIC, UW-Madison Population Lab, CDFI, US Census, Google Maps, CUNA