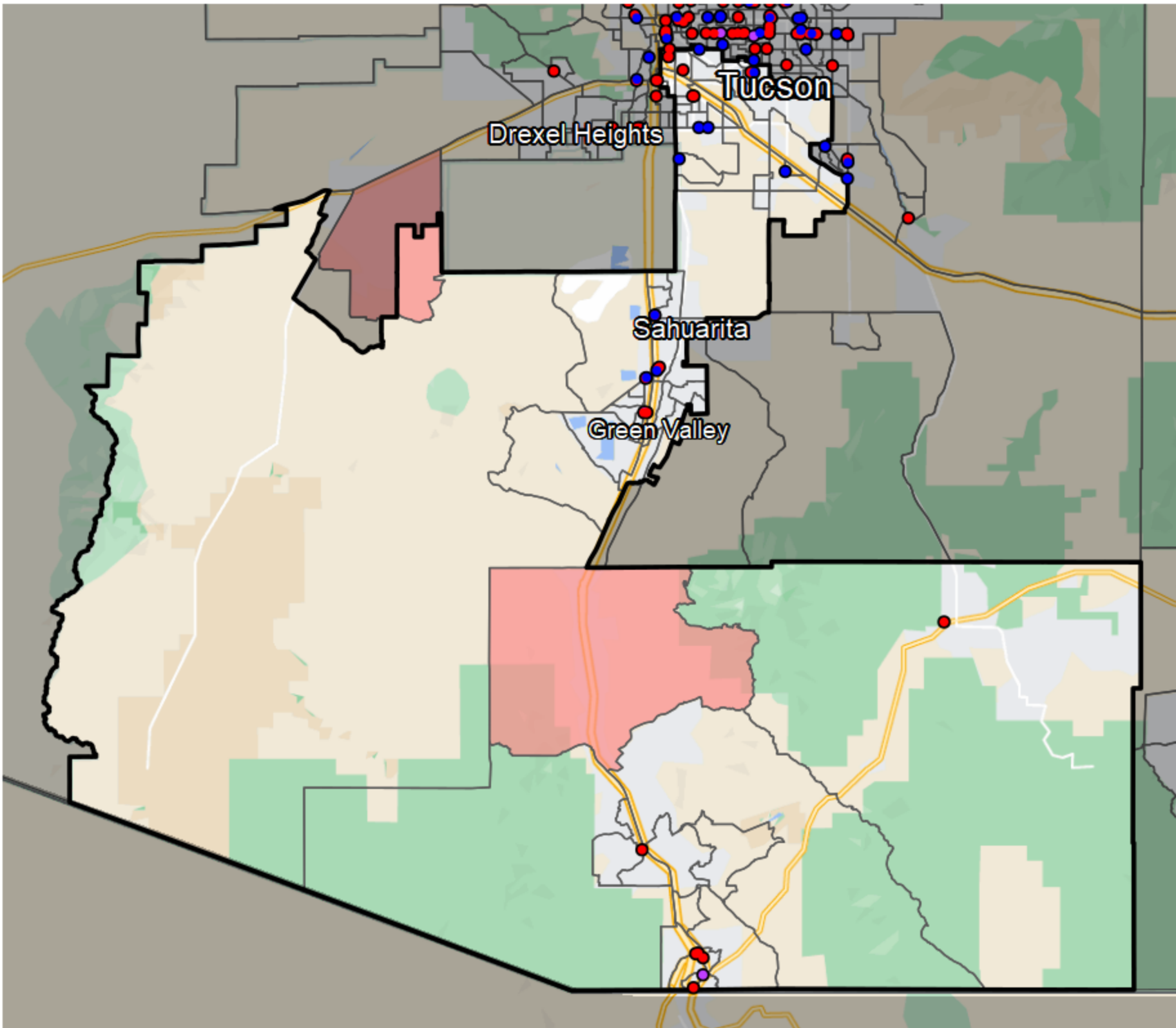


## Arizona - State House District 2



- Banking Desert**
- No Branches within 10 Miles of Population Center
- Financial Institutions**
- Bank: 2
  - Bank, Out-of-State: 24
  - Credit Union: 10
  - Credit Union, Out-of-State: 0

Sources: NCUA, FDIC, UW-Madison Population Lab, CDFI, US Census, Google Maps, CUNA