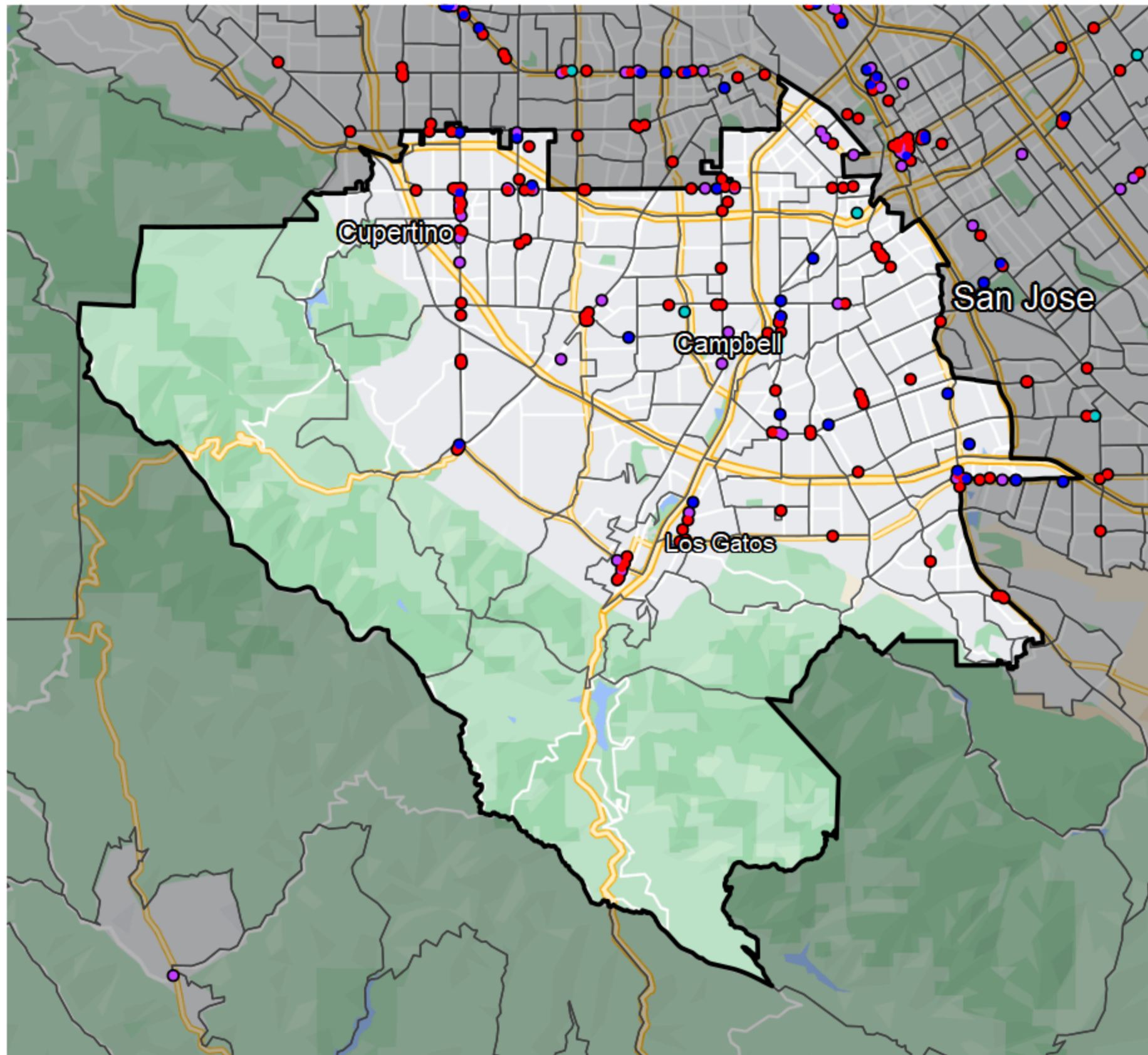


California - Assembly District 28



- Banking Desert**
No Branches within 10 Miles of Population Center
- Financial Institutions**
- Bank: 25
 - Bank, Out-of-State: 90
 - Credit Union: 17
 - Credit Union, Out-of-State: 2

Sources: NCUA, FDIC, UW-Madison Population Lab, CDFI, US Census, Google Maps, CUNA