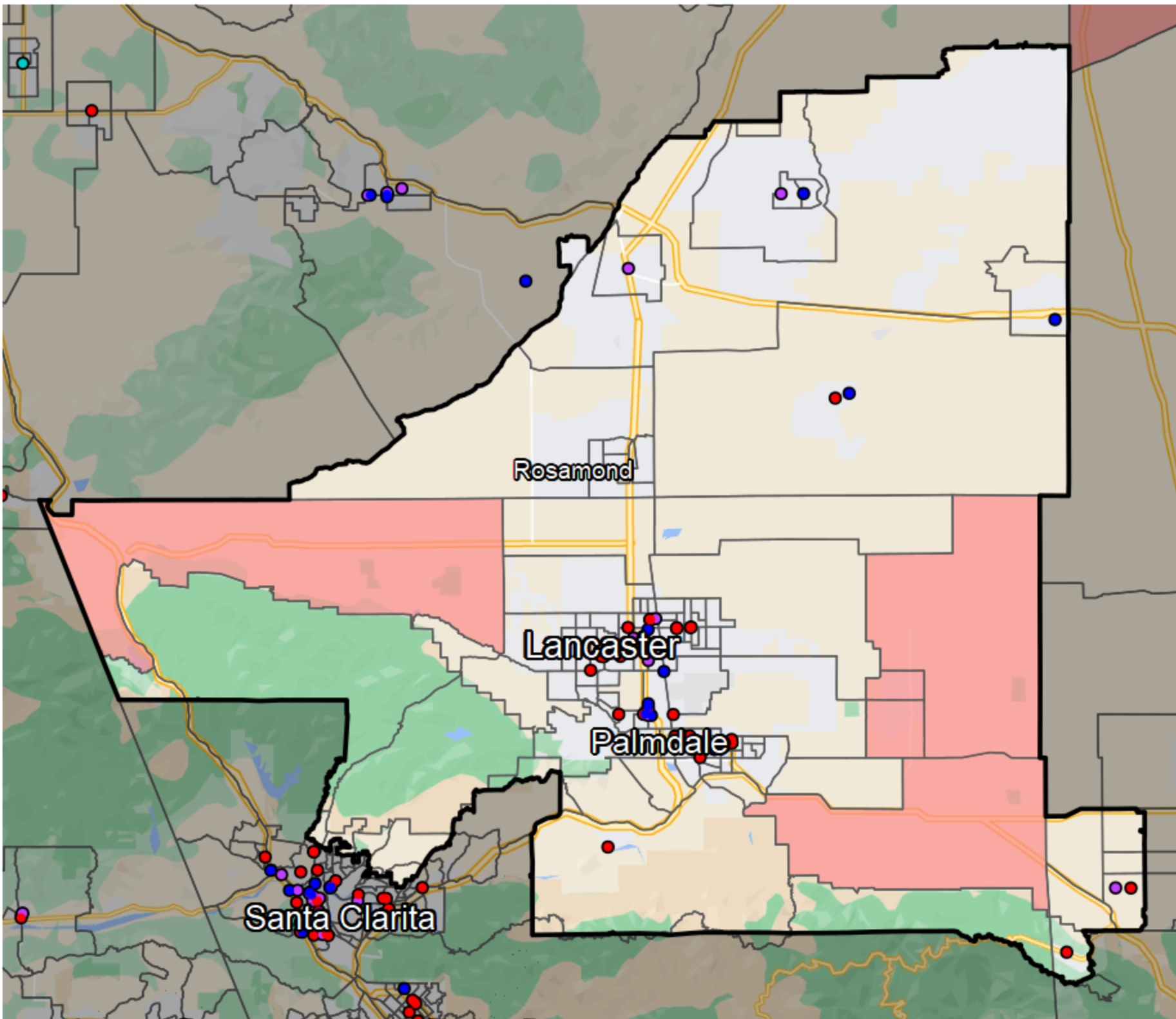


# California - Assembly District 36



**Banking Desert**  
No Branches within 10 Miles of Population Center

**Financial Institutions**

- Bank: 7
- Bank, Out-of-State: 32
- Credit Union: 12
- Credit Union, Out-of-State: 0

Sources: NCUA, FDIC, UW-Madison Population Lab, CDFI, US Census, Google Maps, CUNA