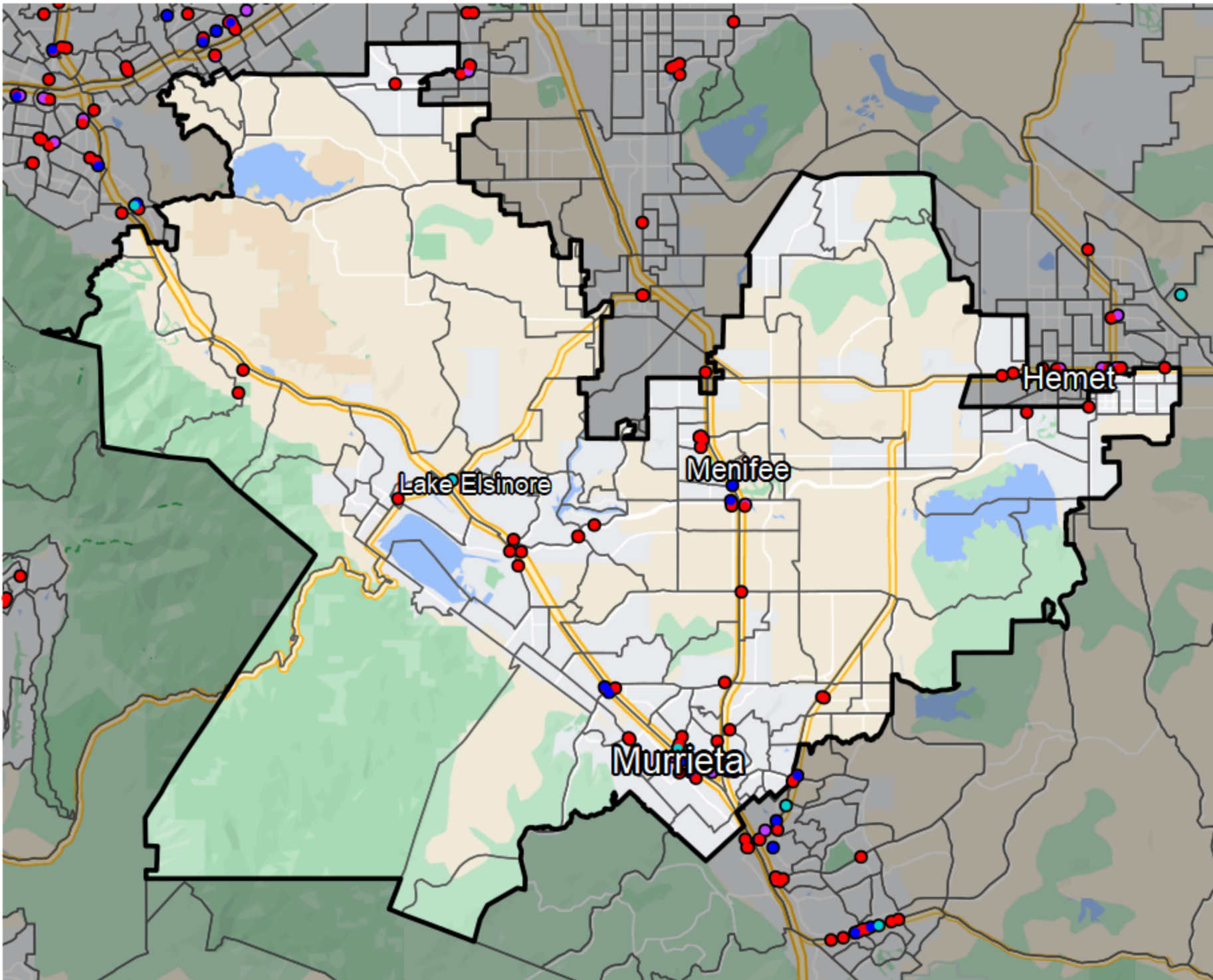


# California - Assembly District 67



- Banking Desert**
  - No Branches within 10 Miles of Population Center
- Financial Institutions**
  - Bank: 5
  - Bank, Out-of-State: 40
  - Credit Union: 9
  - Credit Union, Out-of-State: 2

Sources: NCUA, FDIC, UW-Madison Population Lab, CDFI, US Census, Google Maps, CUNA