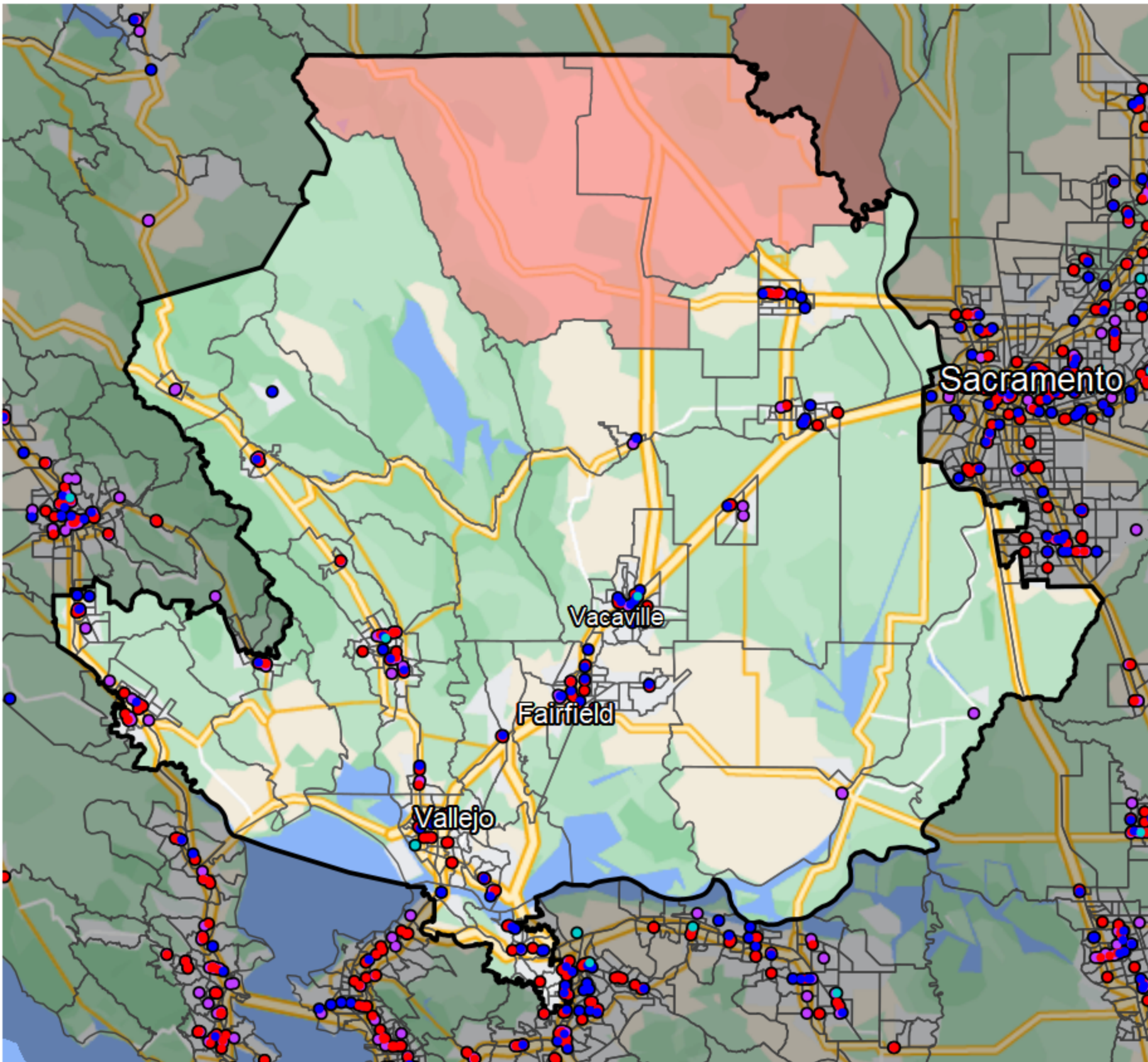


# California - State Senate District 3



**Banking Desert**  
No Branches within 10 Miles of Population Center

**Financial Institutions**

- Bank: 72
- Bank, Out-of-State: 104
- Credit Union: 56
- Credit Union, Out-of-State: 4

Sources: NCUA, FDIC, UW-Madison Population Lab, CDFI, US Census, Google Maps, CUNA