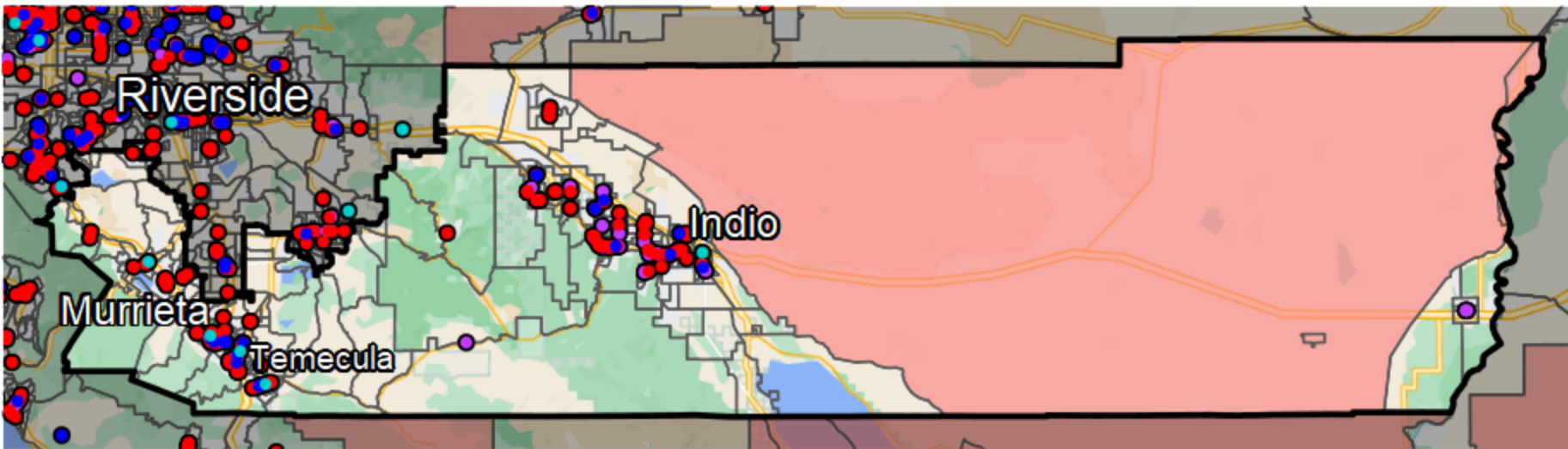


## California - State Senate District 28



**Banking Desert**  
No Branches within 10 Miles of Population Center

**Financial Institutions**

- Bank: 35
- Bank, Out-of-State: 114
- Credit Union: 20
- Credit Union, Out-of-State: 5

Sources: NCUA, FDIC, UW-Madison Population Lab, CDFI, US Census, Google Maps, CUNA