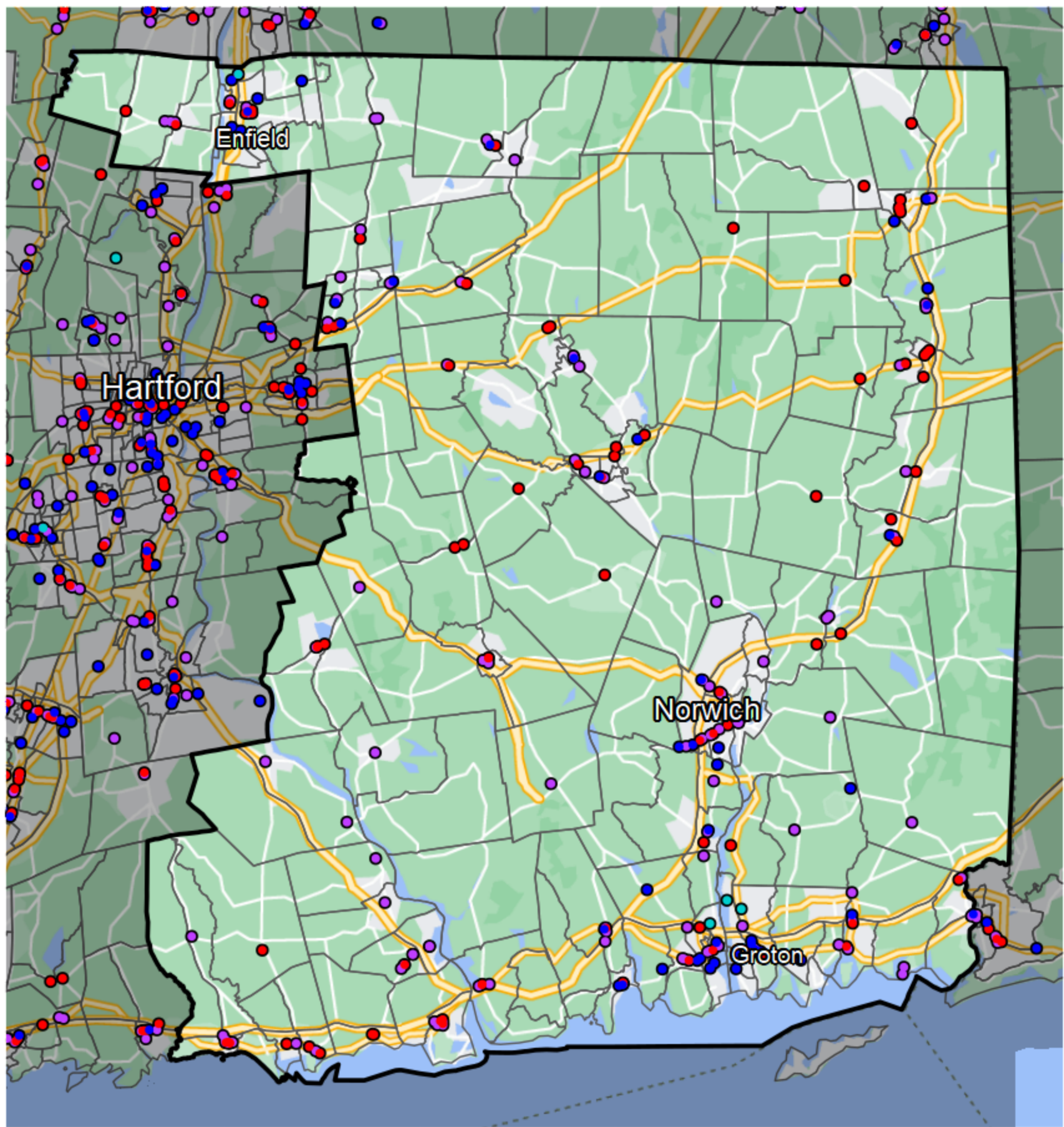


Connecticut - Congressional District 2



- Banking Desert**
- No Branches within 10 Miles of Population Center
- Financial Institutions**
- Bank: 113
 - Bank, Out-of-State: 87
 - Credit Union: 44
 - Credit Union, Out-of-State: 4

Sources: NCUA, FDIC, UW-Madison Population Lab, CDFI, US Census, Google Maps, CUNA