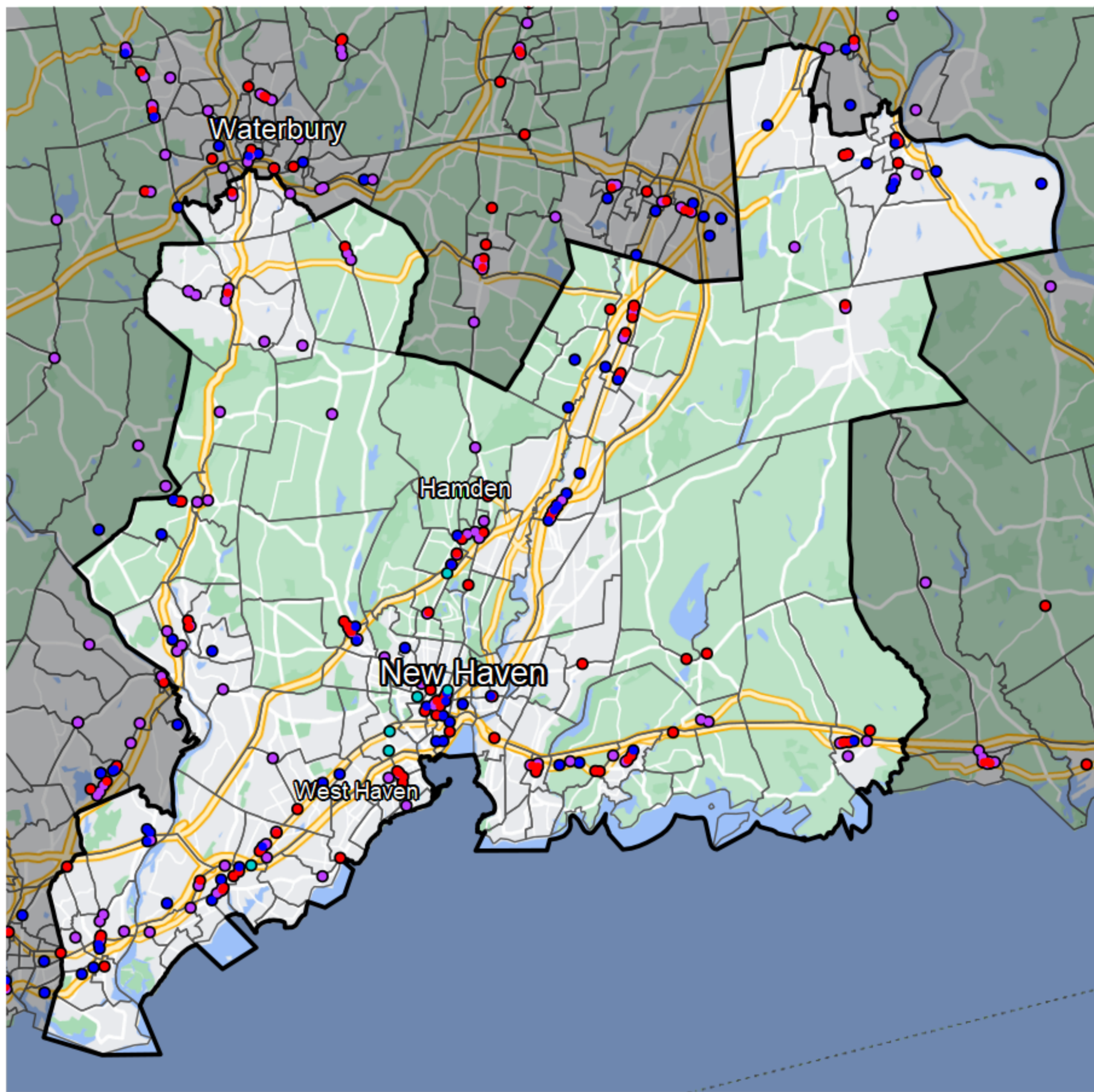


# Connecticut - Congressional District 3



- Financial Institutions**
- Bank: 92
  - Bank, Out-of-State: 92
  - Credit Union: 55
  - Credit Union, Out-of-State: 6
- Banking Desert**
- No Branches within 10 Miles of Population Center

Sources: NCUA, FDIC, UW-Madison Population Lab, CDFI, US Census, Google Maps, CUNA