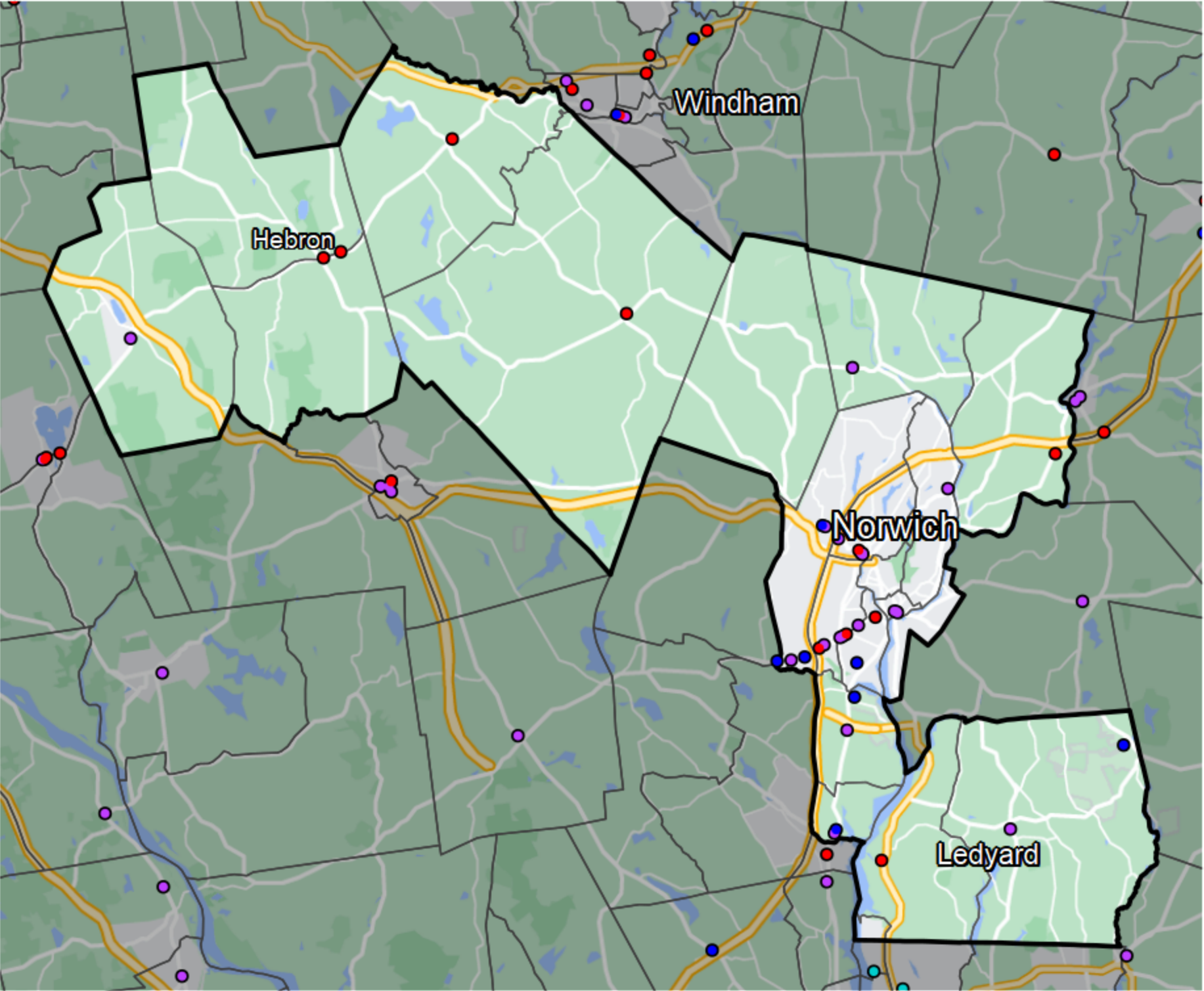


# Connecticut - State Senate District 19



### Financial Institutions

- Bank: 19
- Bank, Out-of-State: 10
- Credit Union: 6
- Credit Union, Out-of-State: 0

### Banking Desert

- No Branches within 10 Miles of Population Center

Sources: NCUA, FDIC, UW-Madison Population Lab, CDFI, US Census, Google Maps, CUNA