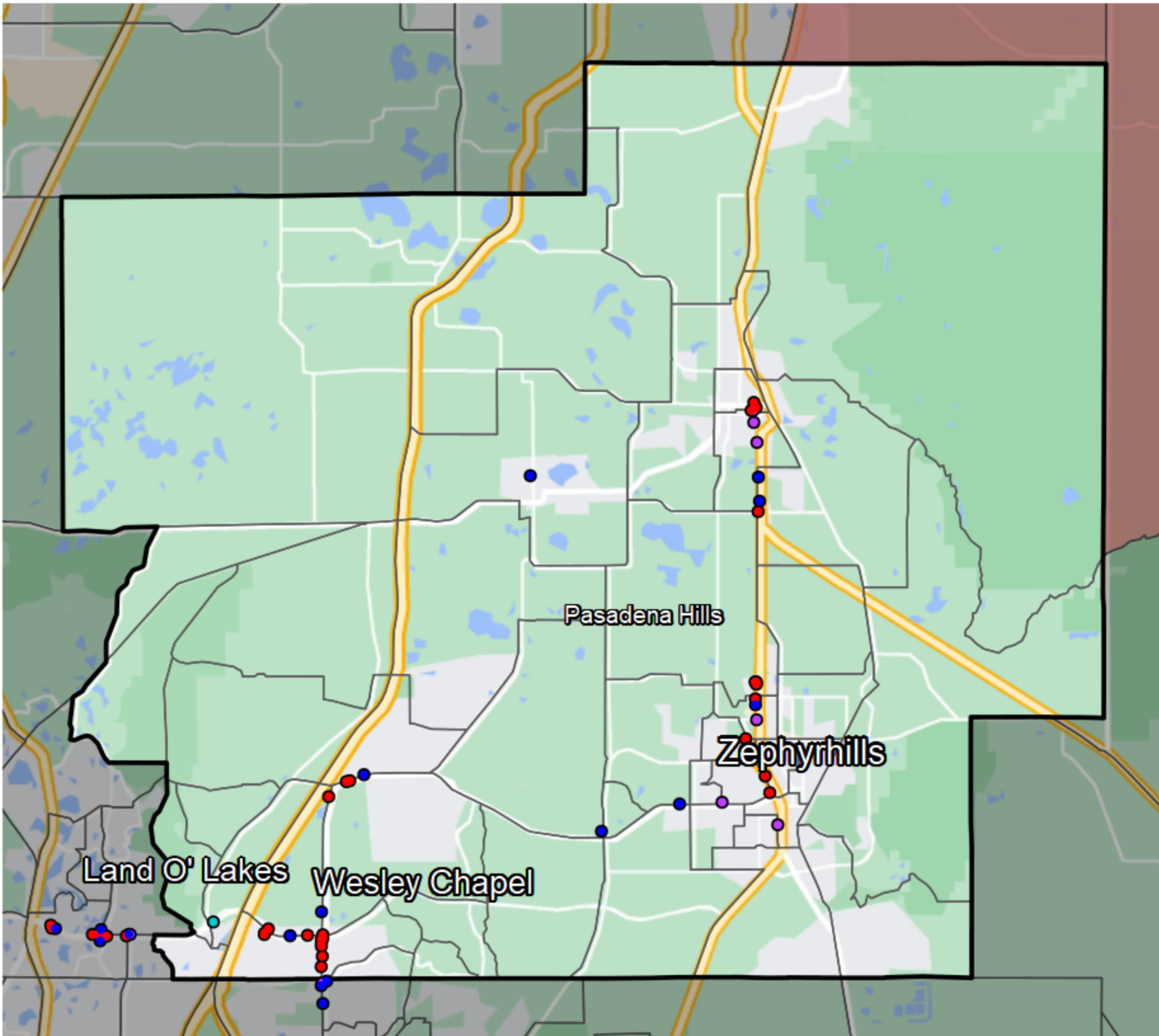


Florida - State House District 38



- Banking Desert**
- No Branches within 10 Miles of Population Center
- Financial Institutions**
- Bank: 6
 - Bank, Out-of-State: 25
 - Credit Union: 9
 - Credit Union, Out-of-State: 1

Sources: NCUA, FDIC, UW-Madison Population Lab, CDFI, US Census, Google Maps, CUNA