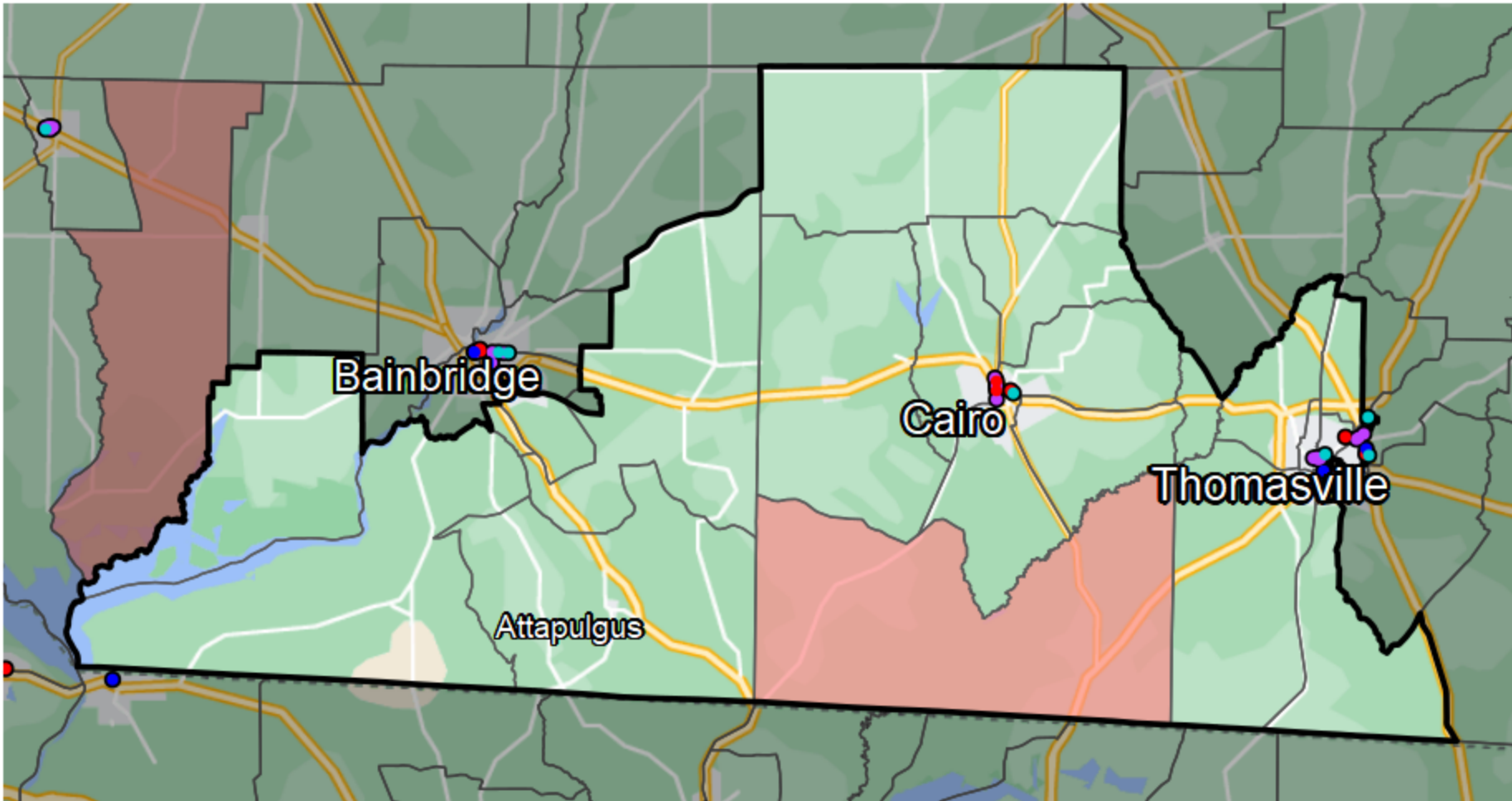


Georgia - State House District 173



Banking Desert

No Branches within 10 Miles of Population Center

Financial Institutions

- Bank: 10
- Bank, Out-of-State: 5
- Credit Union: 1
- Credit Union, Out-of-State: 2

Sources: NCUA, FDIC, UW-Madison Population Lab, CDFI, US Census, Google Maps, CUNA