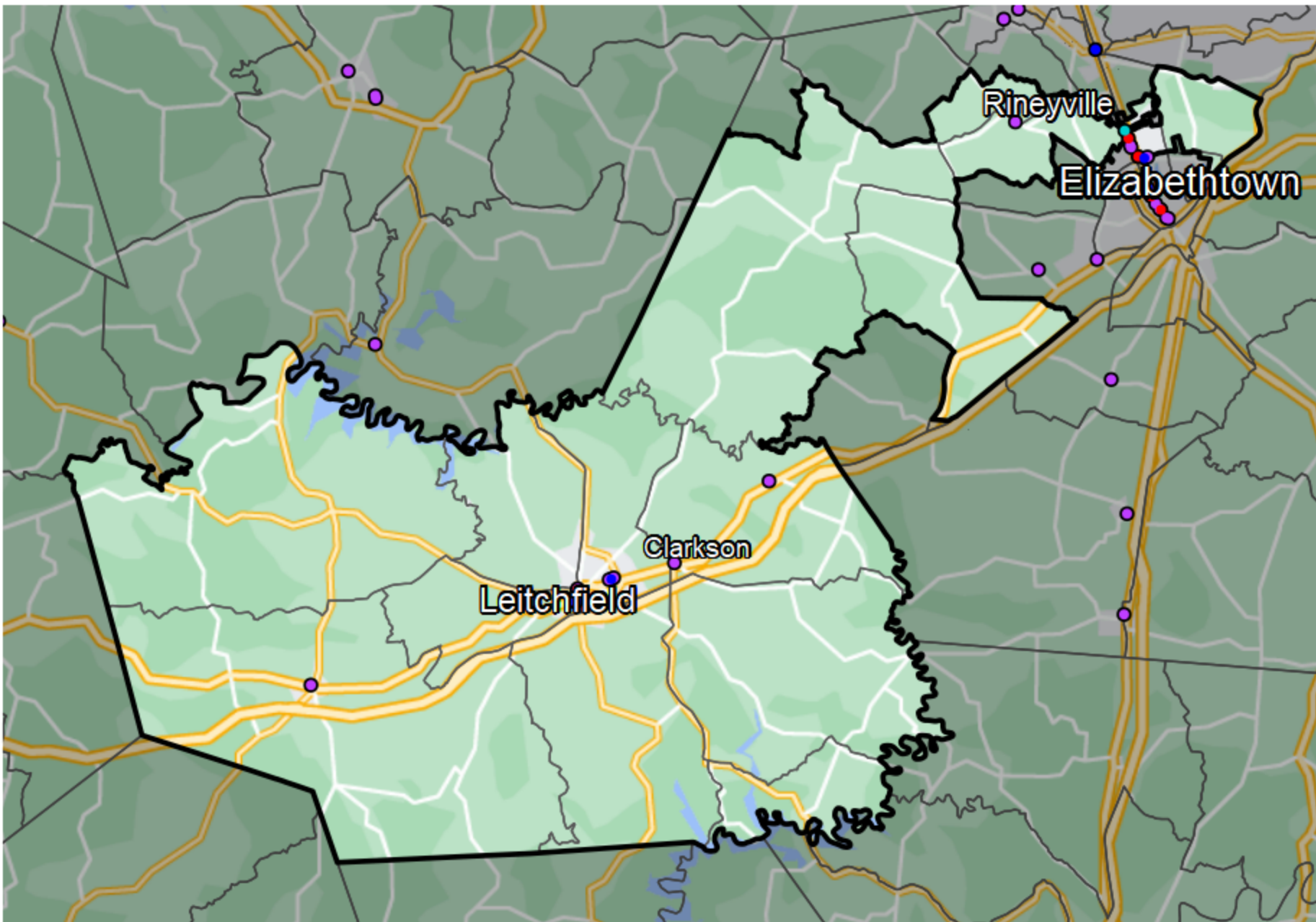


Kentucky - State House District 18



Banking Desert

No Branches within 10 Miles
of Population Center

Financial Institutions

- Bank: 11
- Bank, Out-of-State: 2
- Credit Union: 2
- Credit Union, Out-of-State: 1

Sources: NCUA, FDIC, UW-Madison Population Lab, CDFI, US Census, Google Maps, CUNA