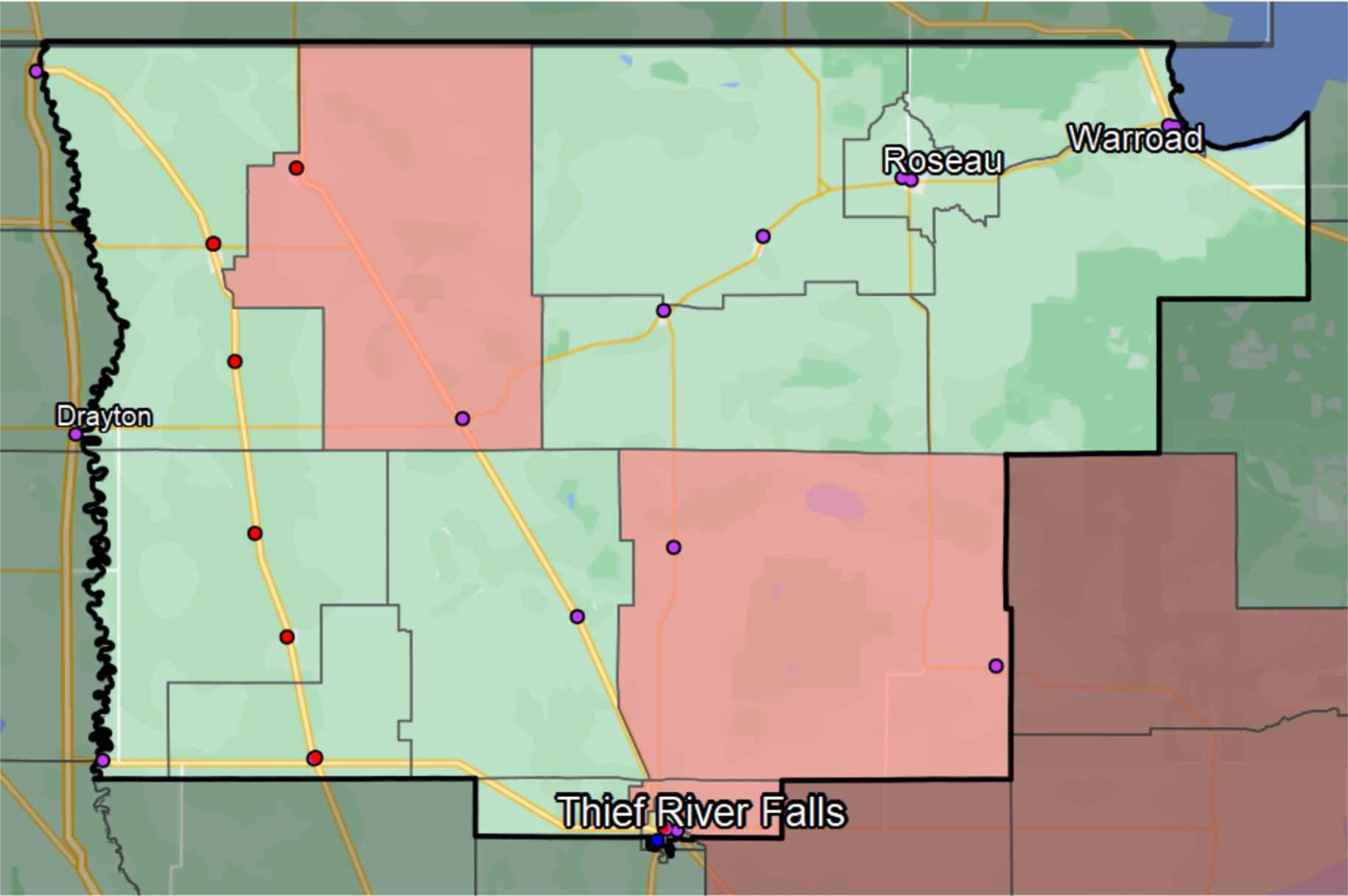


Minnesota - State House District 1A



- Banking Desert
- No Branches within 10 Miles of Population Center
- Financial Institutions
- Bank: 17
 - Bank, Out-of-State: 8
 - Credit Union: 1
 - Credit Union, Out-of-State: 0

Sources: NCUA, FDIC, UW-Madison Population Lab, CDFI, US Census, Google Maps, CUNA