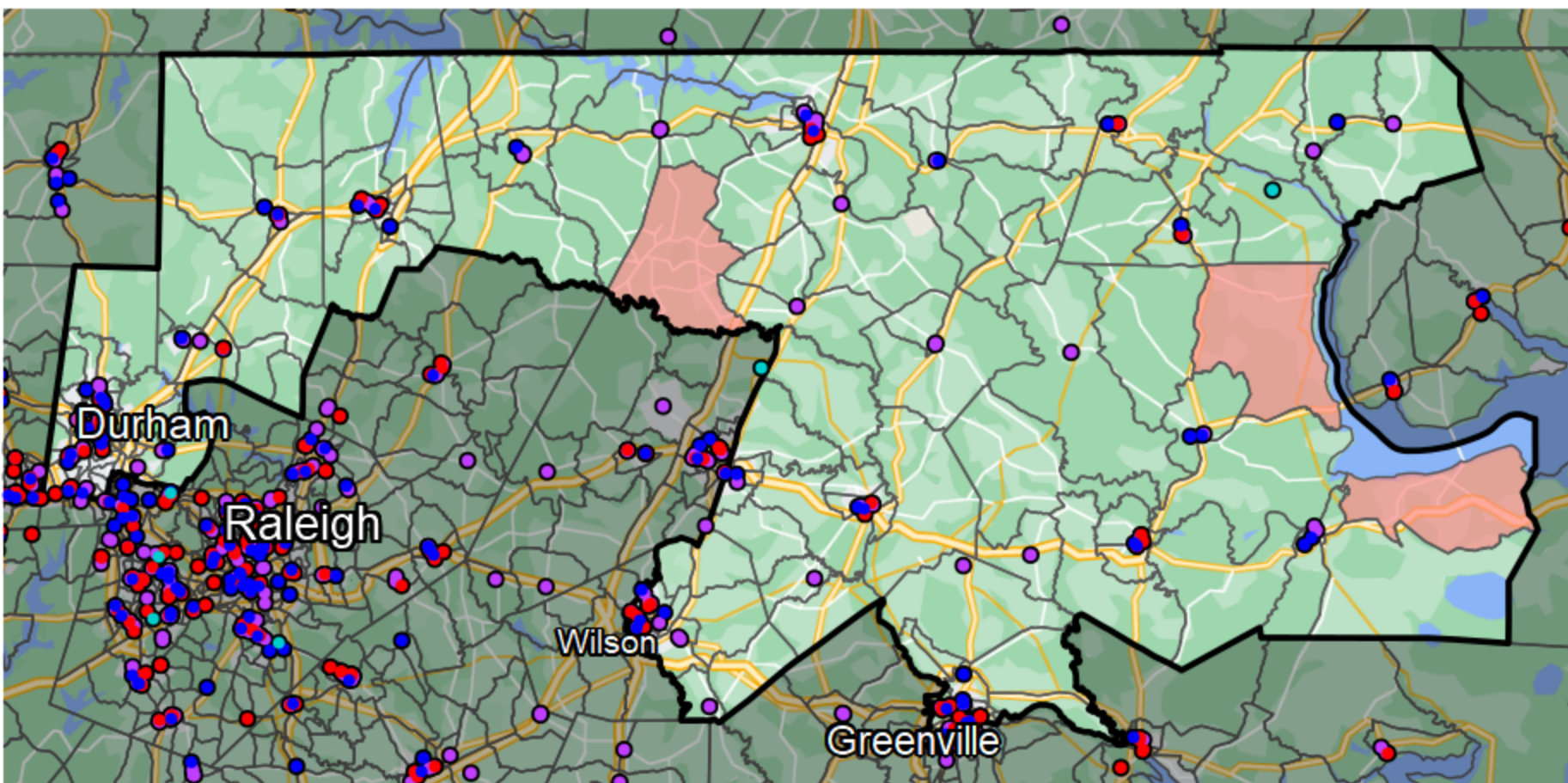


## North Carolina - Congressional District 1



### Banking Desert

No Branches within 10 Miles  
of Population Center

### Financial Institutions

- Bank: 88
- Bank, Out-of-State: 52
- Credit Union: 48
- Credit Union, Out-of-State: 1

Sources: NCUA, FDIC, UW-Madison Population Lab, CDFI, US Census, Google Maps, CUNA