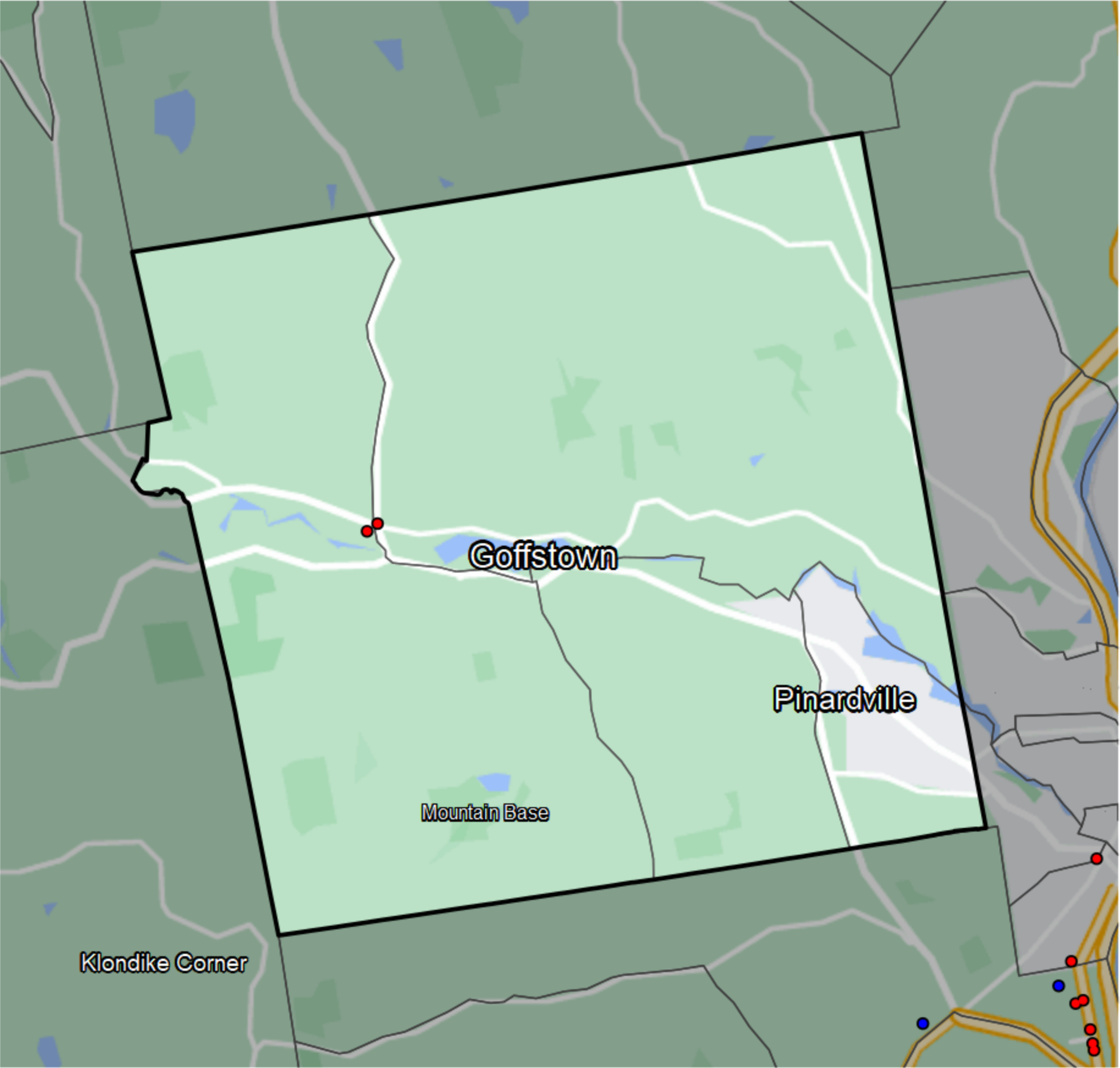


New Hampshire - State House District Hillsborough County No. 6



Banking Desert

No Branches within 10 Miles of Population Center

Financial Institutions

- Bank: 1
- Bank, Out-of-State: 3
- Credit Union: 0
- Credit Union, Out-of-State: 0

Sources: NCUA, FDIC, UW-Madison Population Lab, CDFI, US Census, Google Maps, CUNA