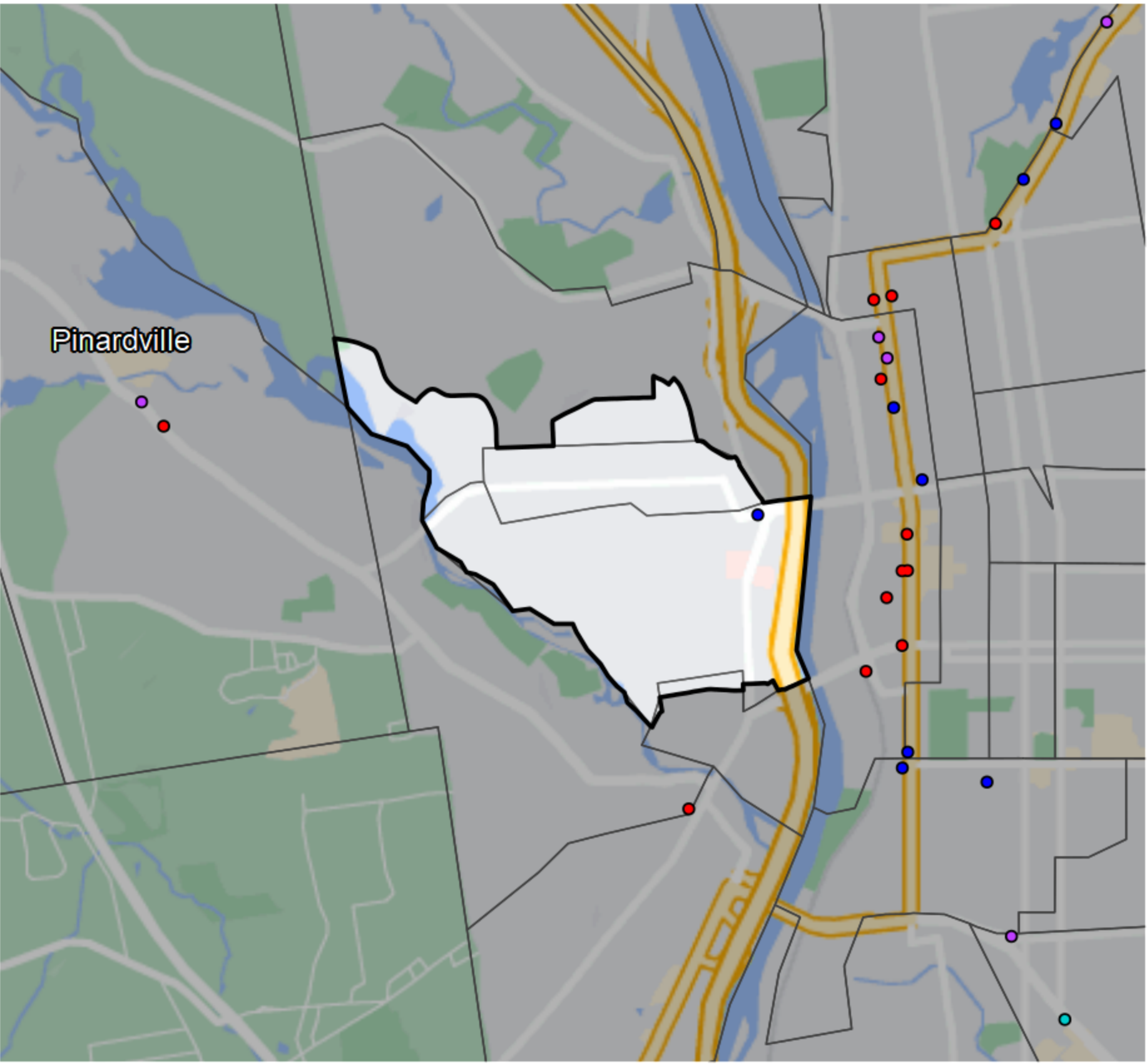


New Hampshire - State House District Hillsborough County No. 18



Pinardville

- Banking Desert**
- No Branches within 10 Miles of Population Center
- Financial Institutions**
- Bank: 0
 - Bank, Out-of-State: 0
 - Credit Union: 1
 - Credit Union, Out-of-State: 0

Sources: NCUA, FDIC, UW-Madison Population Lab, CDFI, US Census, Google Maps, CUNA