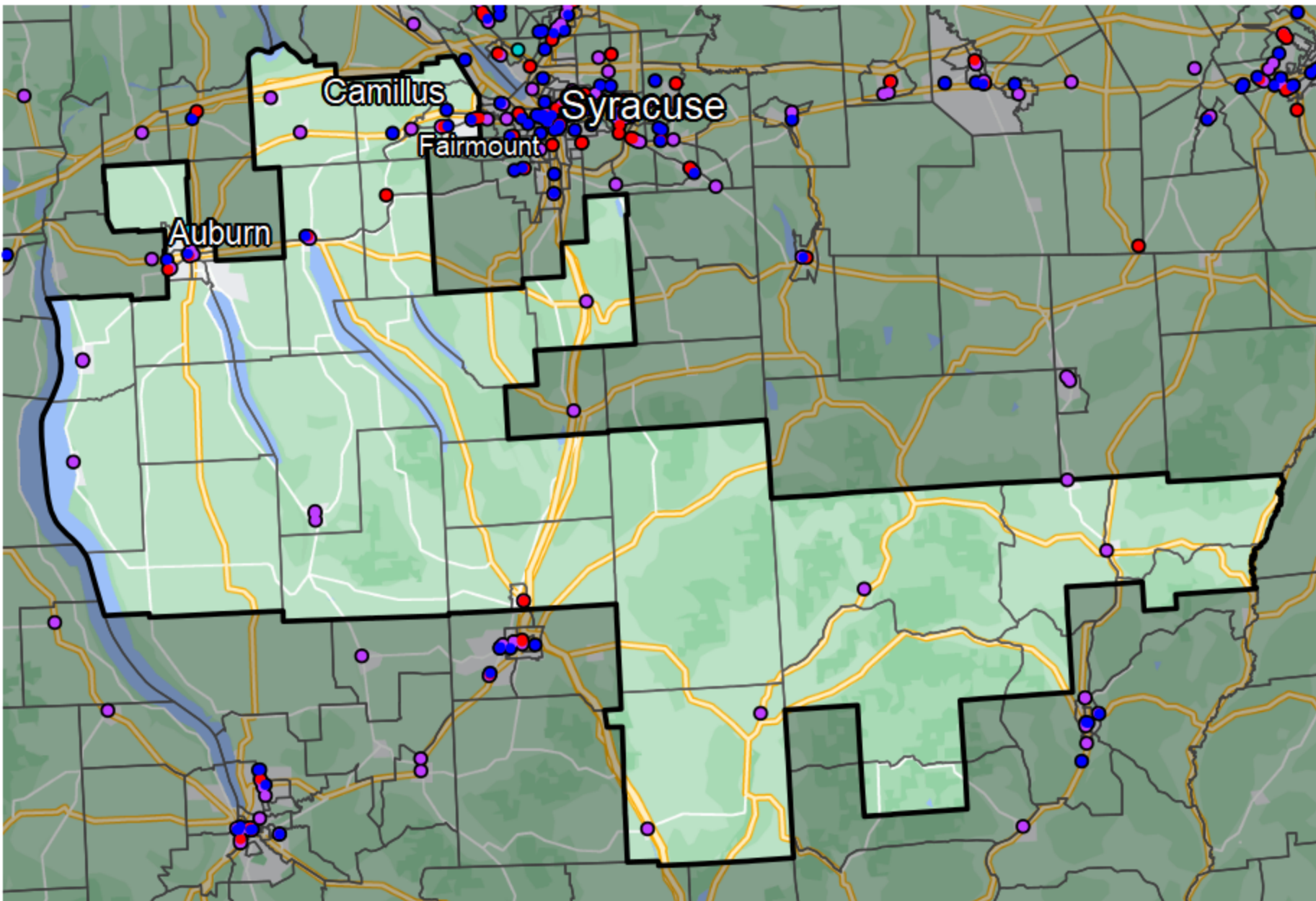


## New York - Assembly District 126



### Banking Desert

No Branches within 10 Miles of Population Center

### Financial Institutions

- Bank: 29
- Bank, Out-of-State: 10
- Credit Union: 9
- Credit Union, Out-of-State: 1

Sources: NCUA, FDIC, UW-Madison Population Lab, CDFI, US Census, Google Maps, CUNA