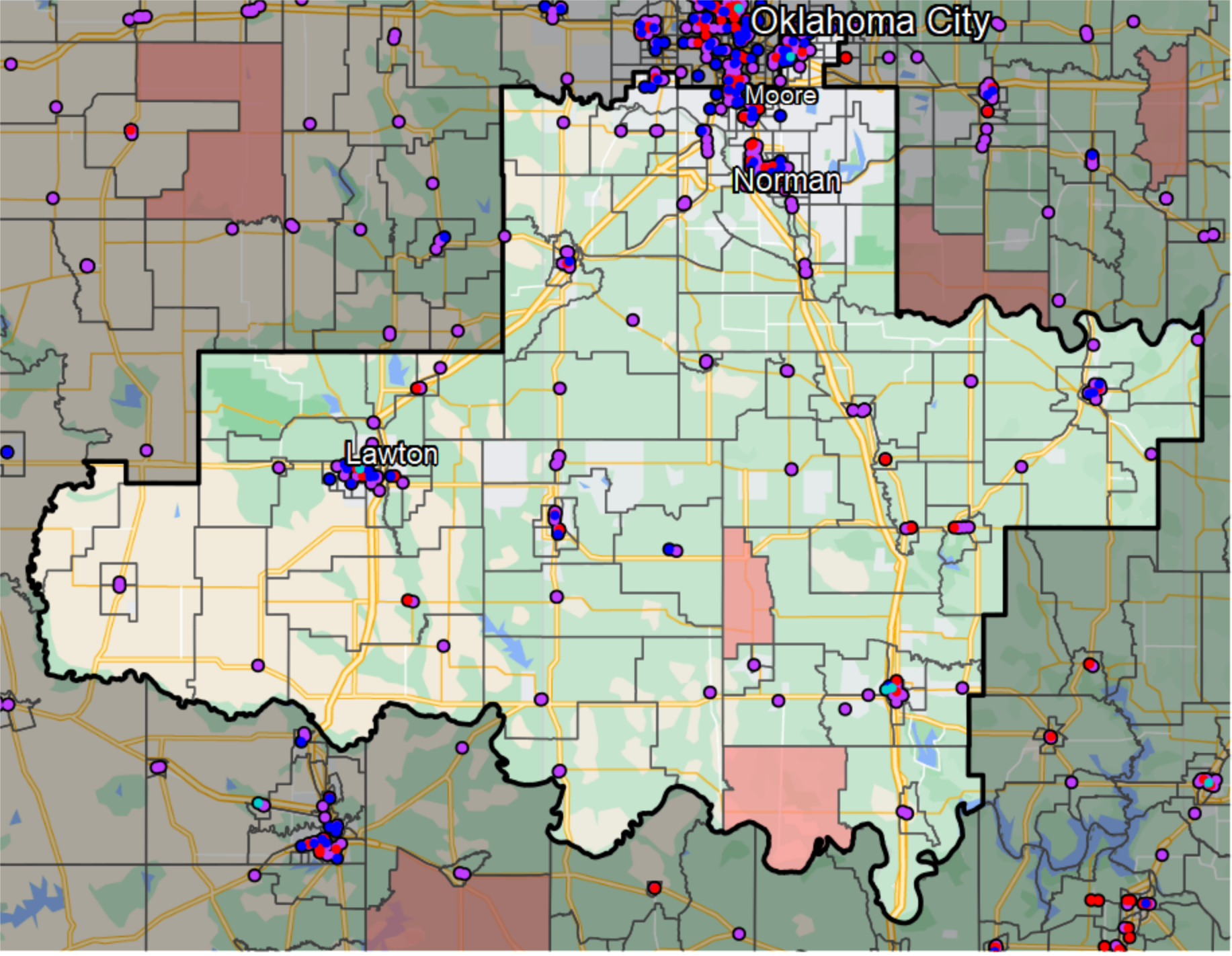


# Oklahoma - Congressional District 4



- Banking Desert**
- No Branches within 10 Miles of Population Center
- Financial Institutions**
- Bank: 220
  - Bank, Out-of-State: 41
  - Credit Union: 50
  - Credit Union, Out-of-State: 4

Sources: NCUA, FDIC, UW-Madison Population Lab, CDFI, US Census, Google Maps, CUNA