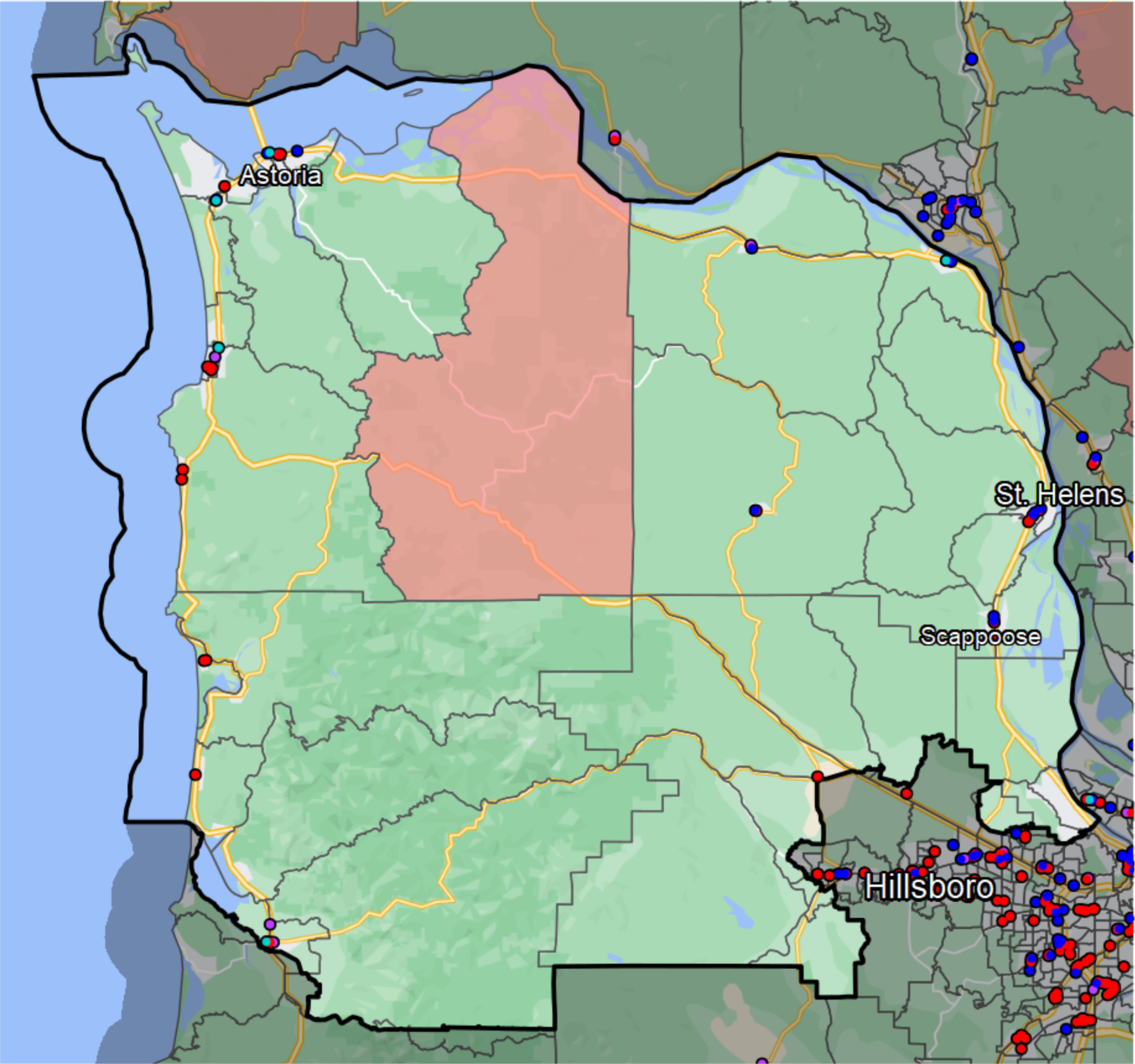


Oregon - State Senate District 16



- Financial Institutions**
- Bank: 5
 - Bank, Out-of-State: 27
 - Credit Union: 11
 - Credit Union, Out-of-State: 5
- Banking Desert**
- No Branches within 10 Miles of Population Center

Sources: NCUA, FDIC, UW-Madison Population Lab, CDFI, US Census, Google Maps, CUNA