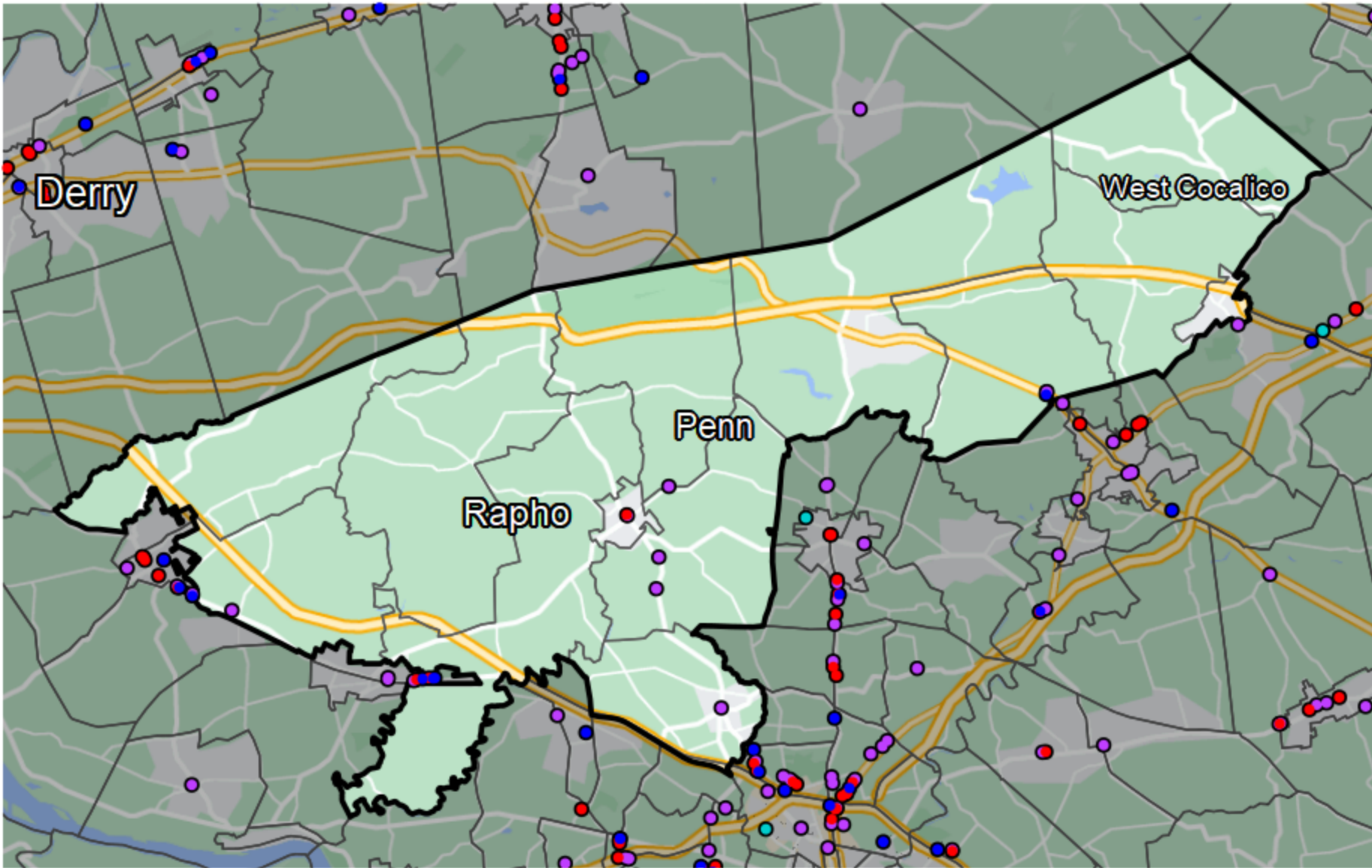


## Pennsylvania - State House District 37



### Banking Desert

No Branches within 10 Miles of Population Center

### Financial Institutions

- Bank: 10
- Bank, Out-of-State: 2
- Credit Union: 4
- Credit Union, Out-of-State: 0

Sources: NCUA, FDIC, UW-Madison Population Lab, CDFI, US Census, Google Maps, CUNA