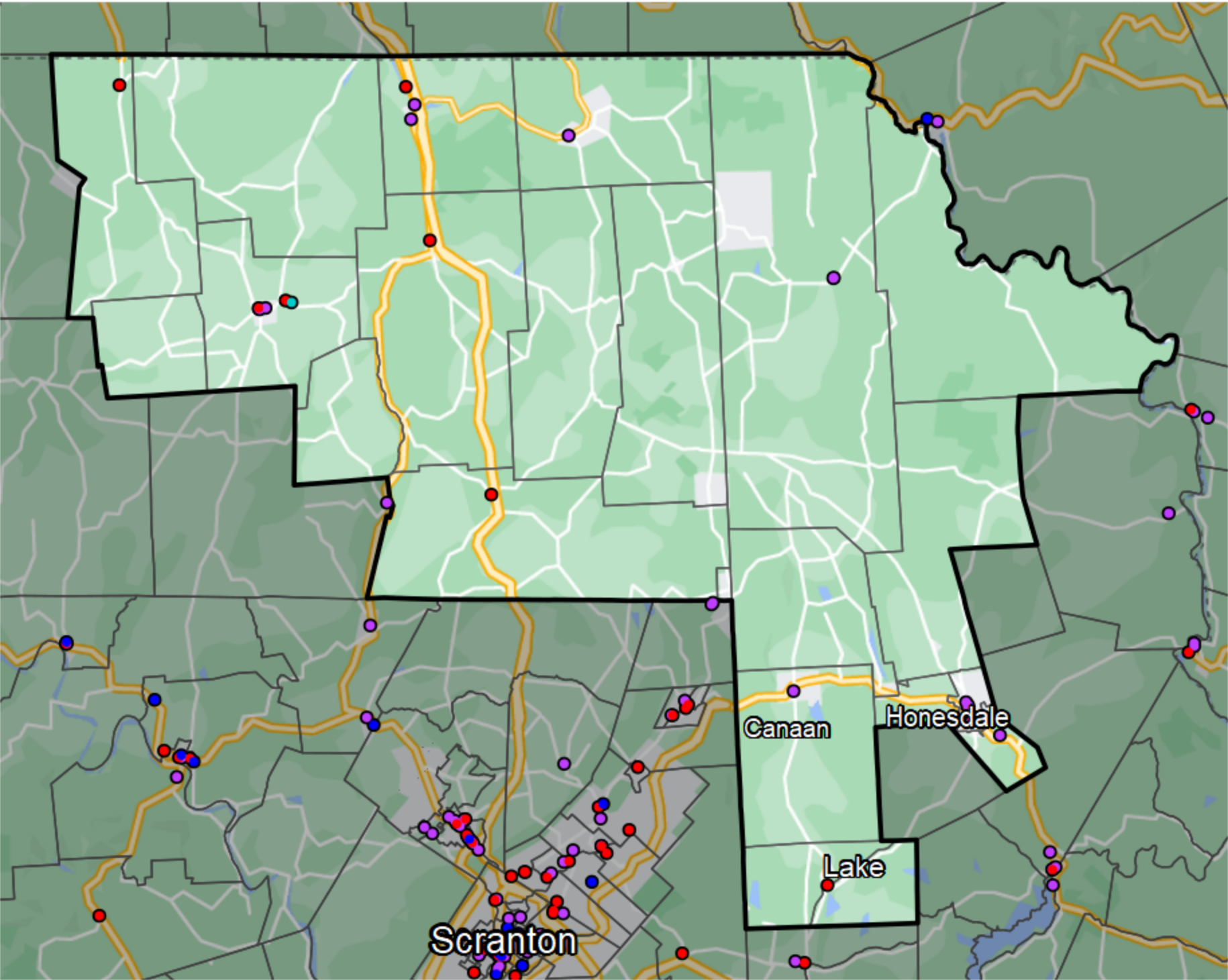


# Pennsylvania - State House District 111



### Financial Institutions

- Bank: 17
- Bank, Out-of-State: 7
- Credit Union: 0
- Credit Union, Out-of-State: 1

### Banking Desert

- No Branches within 10 Miles of Population Center

Sources: NCUA, FDIC, UW-Madison Population Lab, CDFI, US Census, Google Maps, CUNA