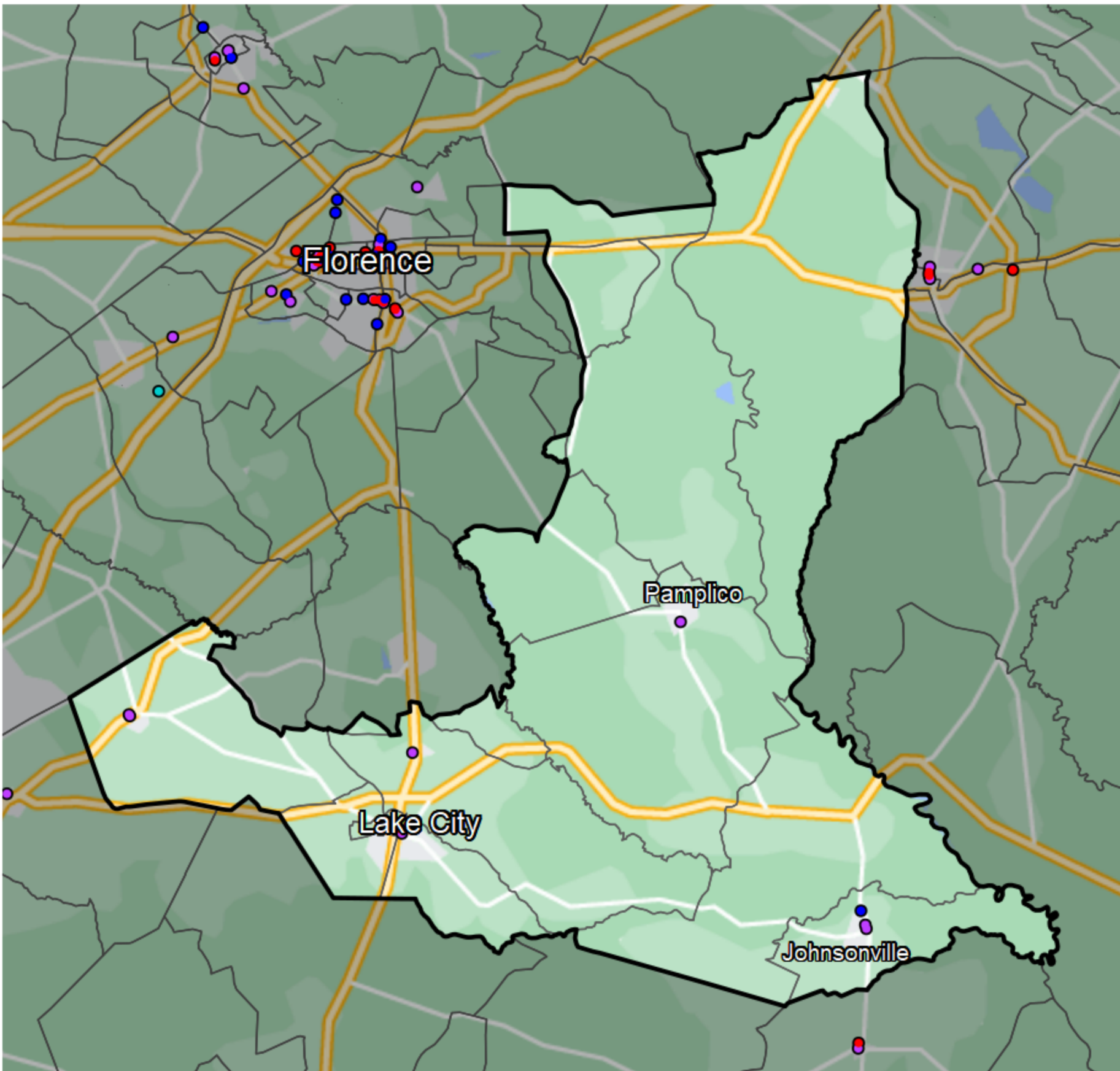


# South Carolina - State House District HD-061



**Banking Desert**  
No Branches within 10 Miles of Population Center

**Financial Institutions**  
Bank: 7  
Bank, Out-of-State: 3  
Credit Union: 2  
Credit Union, Out-of-State: 0

Sources: NCUA, FDIC, UW-Madison Population Lab, CDFI, US Census, Google Maps, CUNA