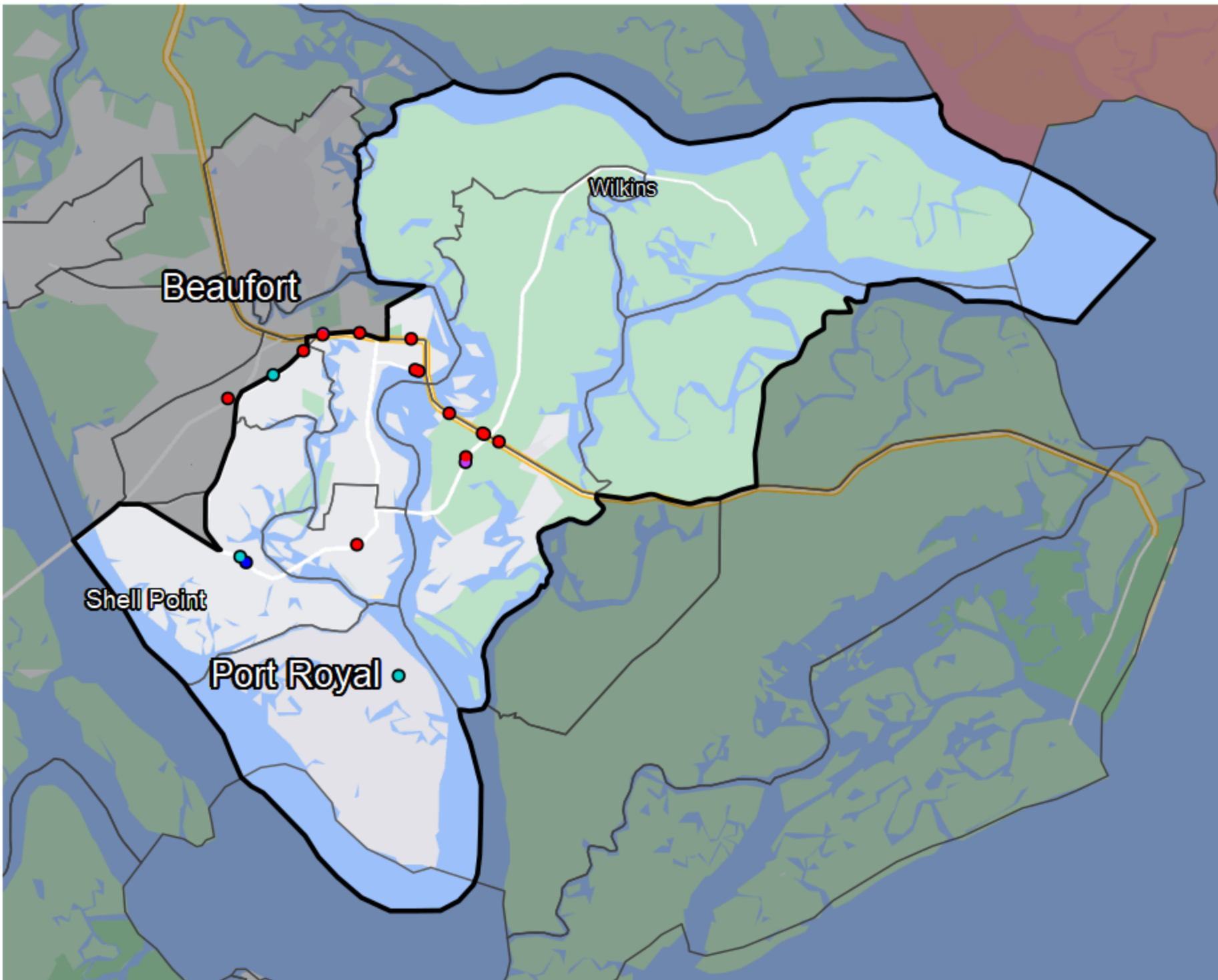


# South Carolina - State House District HD-124



**Banking Desert**  
No Branches within 10 Miles of Population Center

**Financial Institutions**

- Bank: 1
- Bank, Out-of-State: 11
- Credit Union: 1
- Credit Union, Out-of-State: 3

Sources: NCUA, FDIC, UW-Madison Population Lab, CDFI, US Census, Google Maps, CUNA