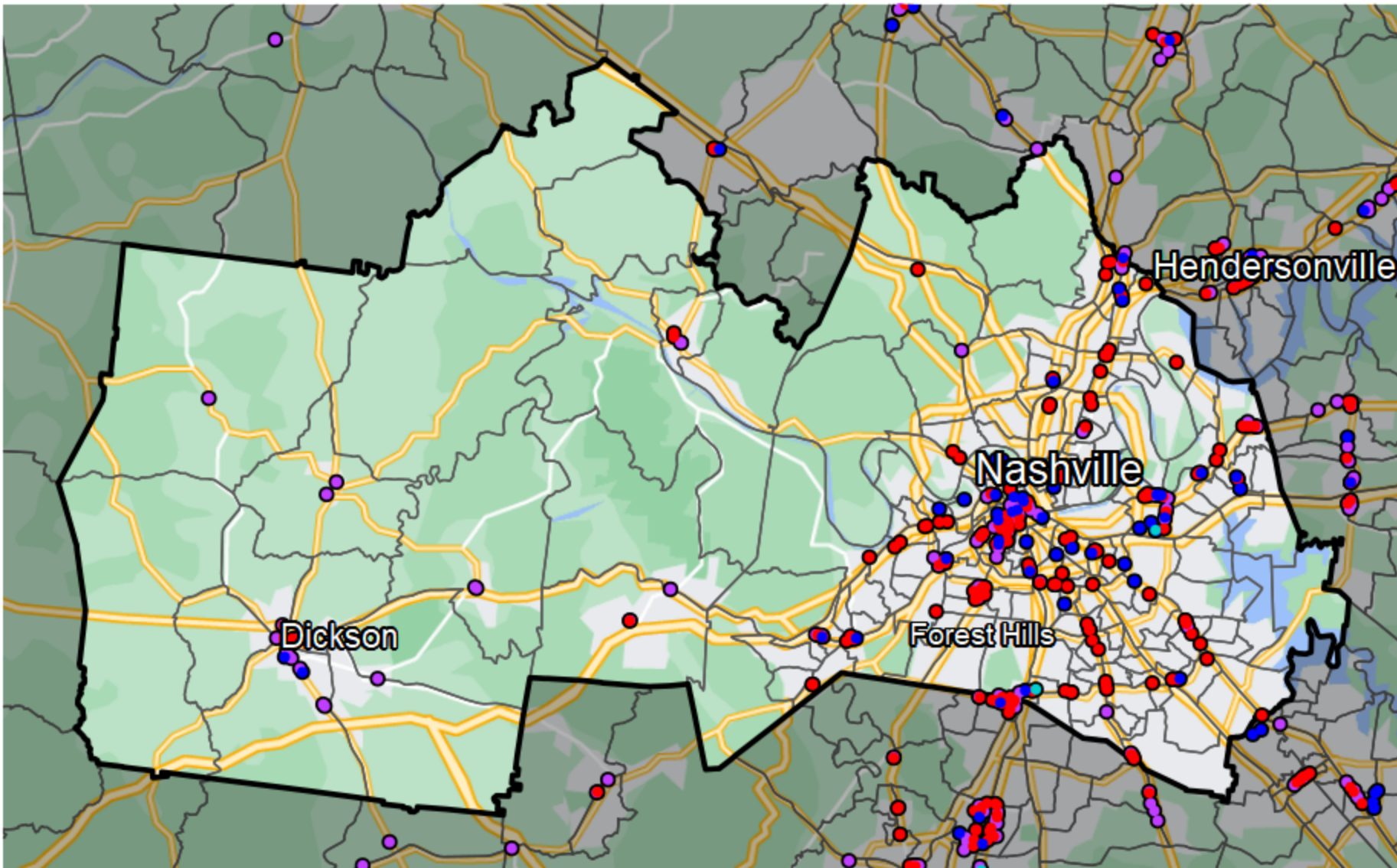


Tennessee - Congressional District 5



Banking Desert
No Branches within 10 Miles of Population Center

Financial Institutions

- Bank: 76
- Bank, Out-of-State: 155
- Credit Union: 46
- Credit Union, Out-of-State: 2

Sources: NCUA, FDIC, UW-Madison Population Lab, CDFI, US Census, Google Maps, CUNA