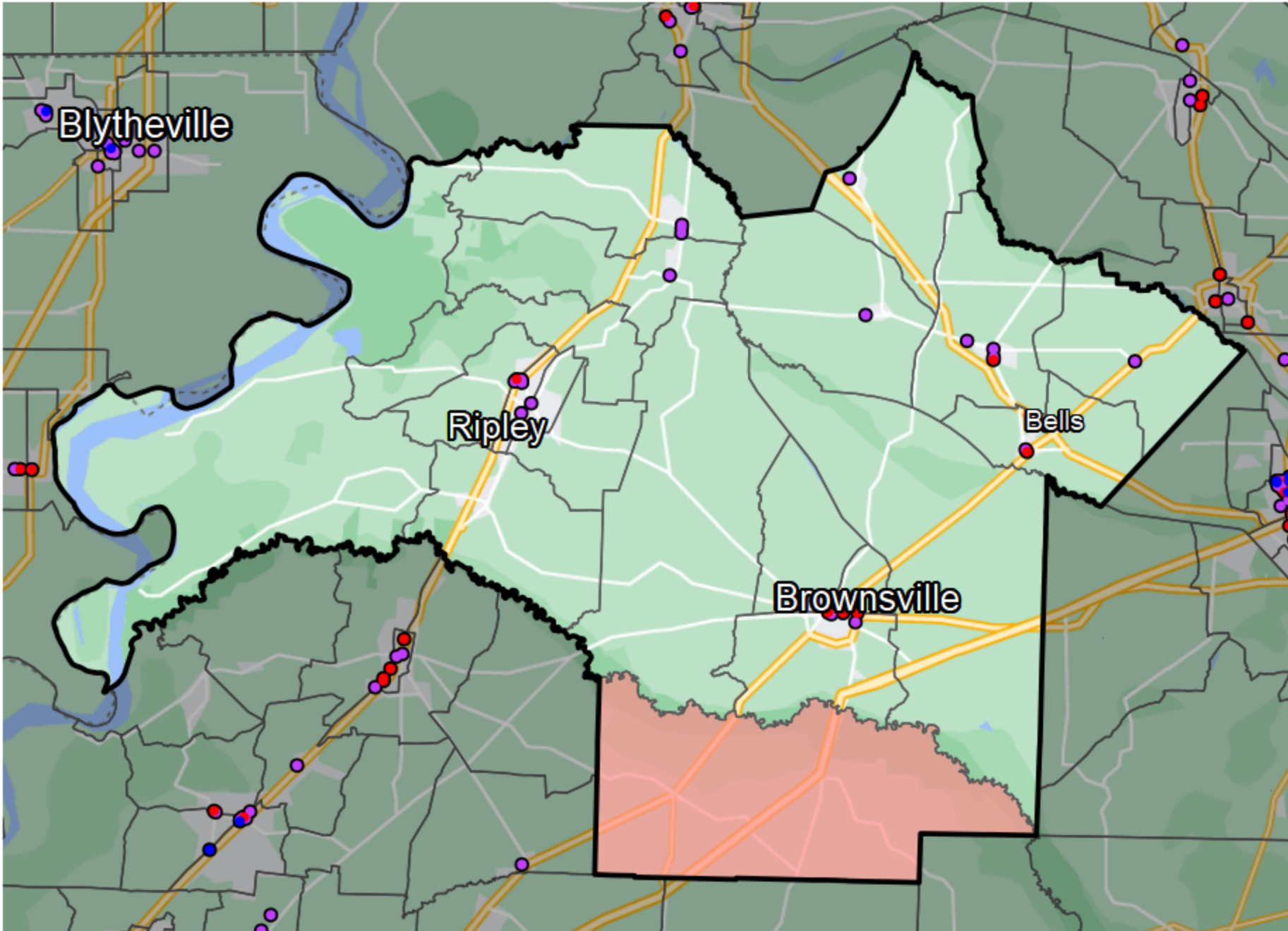


# Tennessee - State House District 82



**Banking Desert**  
No Branches within 10 Miles of Population Center

**Financial Institutions**

- Bank: 21
- Bank, Out-of-State: 6
- Credit Union: 0
- Credit Union, Out-of-State: 0

Sources: NCUA, FDIC, UW-Madison Population Lab, CDFI, US Census, Google Maps, CUNA