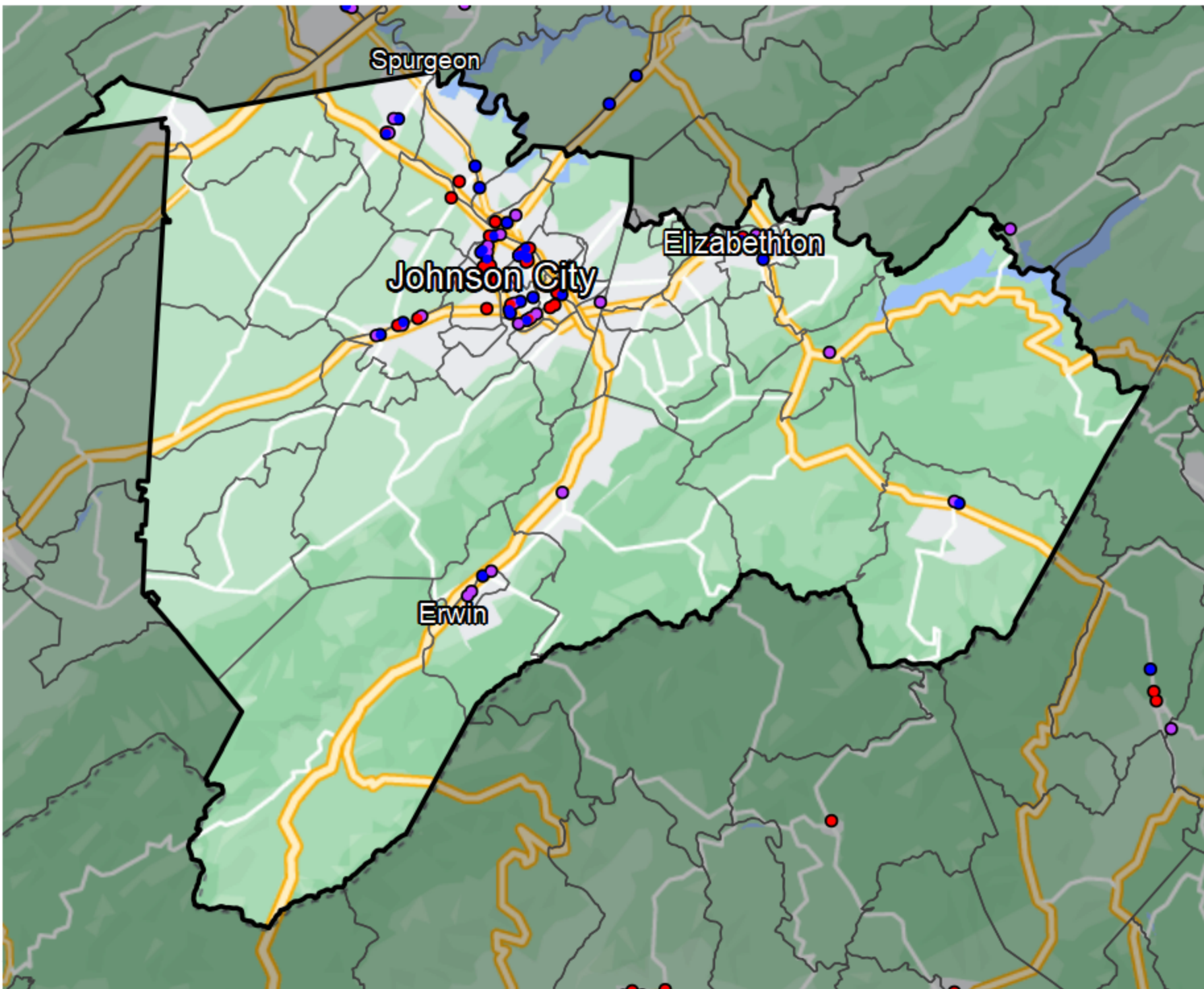


### Tennessee - State Senate District 3



- Banking Desert**
- No Branches within 10 Miles of Population Center
- Financial Institutions**
- Bank: 34
  - Bank, Out-of-State: 25
  - Credit Union: 27
  - Credit Union, Out-of-State: 0

Sources: NCUA, FDIC, UW-Madison Population Lab, CDFI, US Census, Google Maps, CUNA