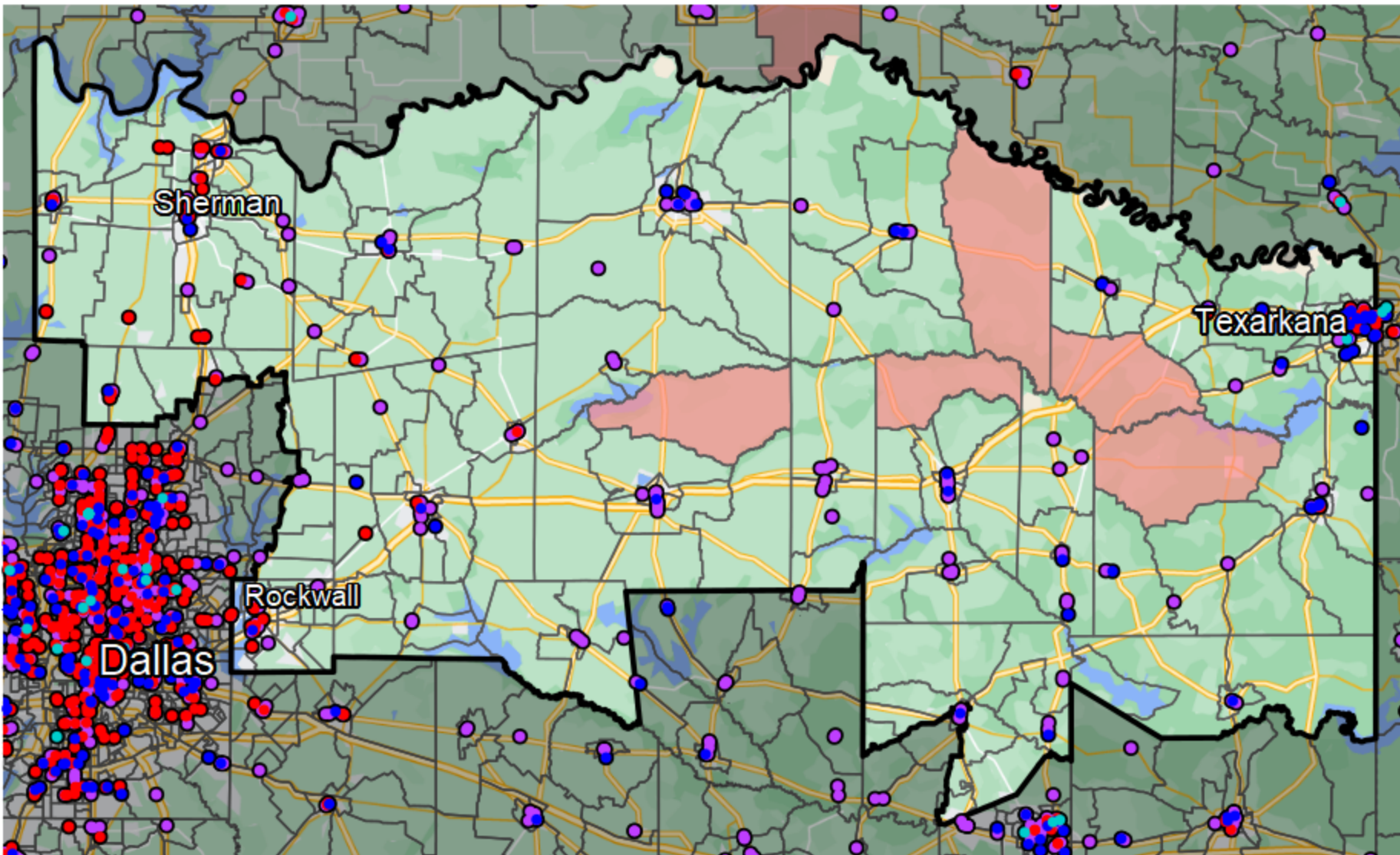


Texas - Congressional District 4



Banking Desert
No Branches within 10 Miles
of Population Center

Financial Institutions

- Bank: 151
- Bank, Out-of-State: 63
- Credit Union: 55
- Credit Union, Out-of-State: 1

Sources: NCUA, FDIC, UW-Madison Population Lab, CDFI, US Census, Google Maps, CUNA