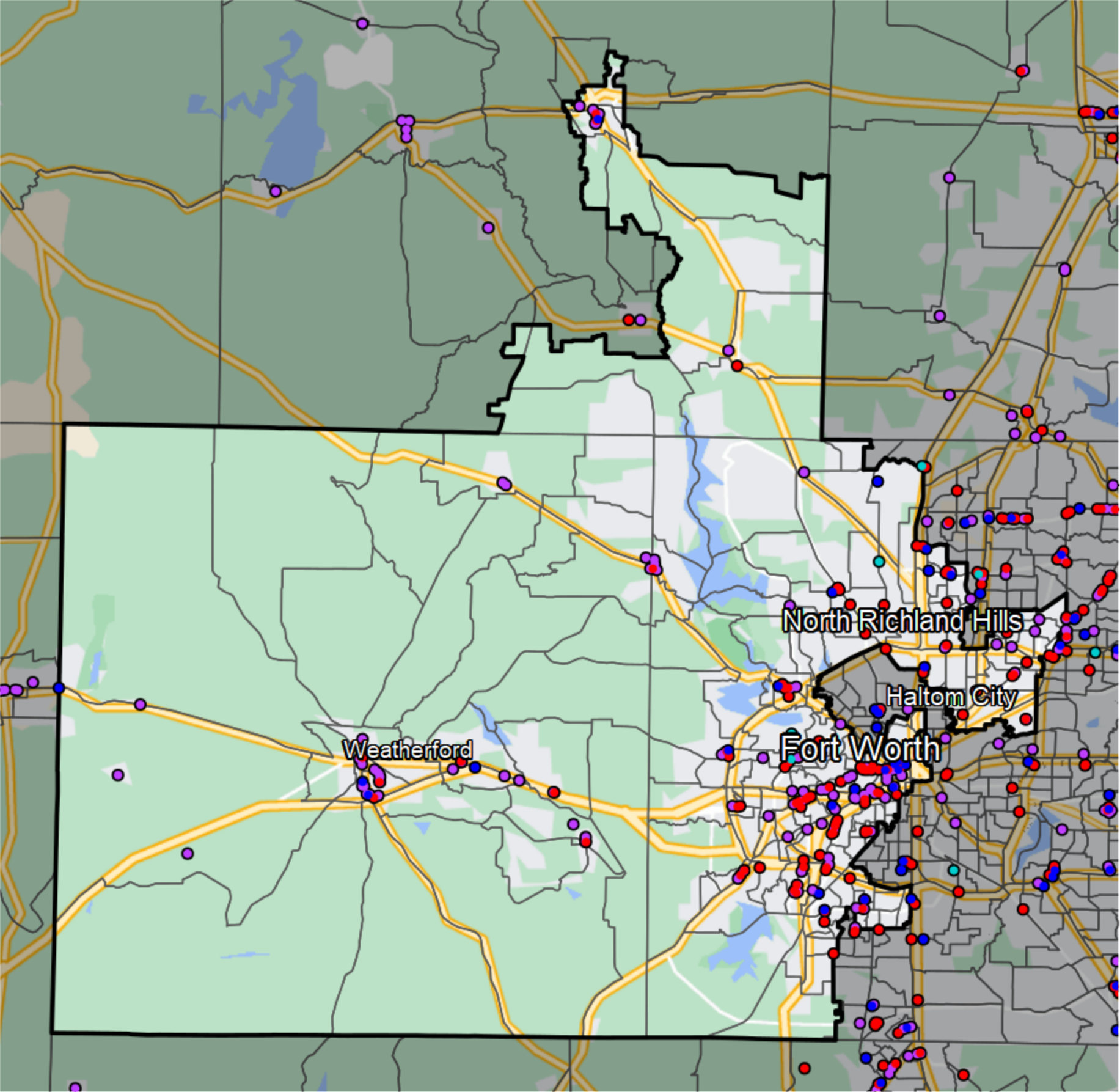


# Texas - Congressional District 12



- Banking Desert**
- No Branches within 10 Miles of Population Center
- Financial Institutions**
- Bank: 126
  - Bank, Out-of-State: 106
  - Credit Union: 27
  - Credit Union, Out-of-State: 4

Sources: NCUA, FDIC, UW-Madison Population Lab, CDFI, US Census, Google Maps, CUNA