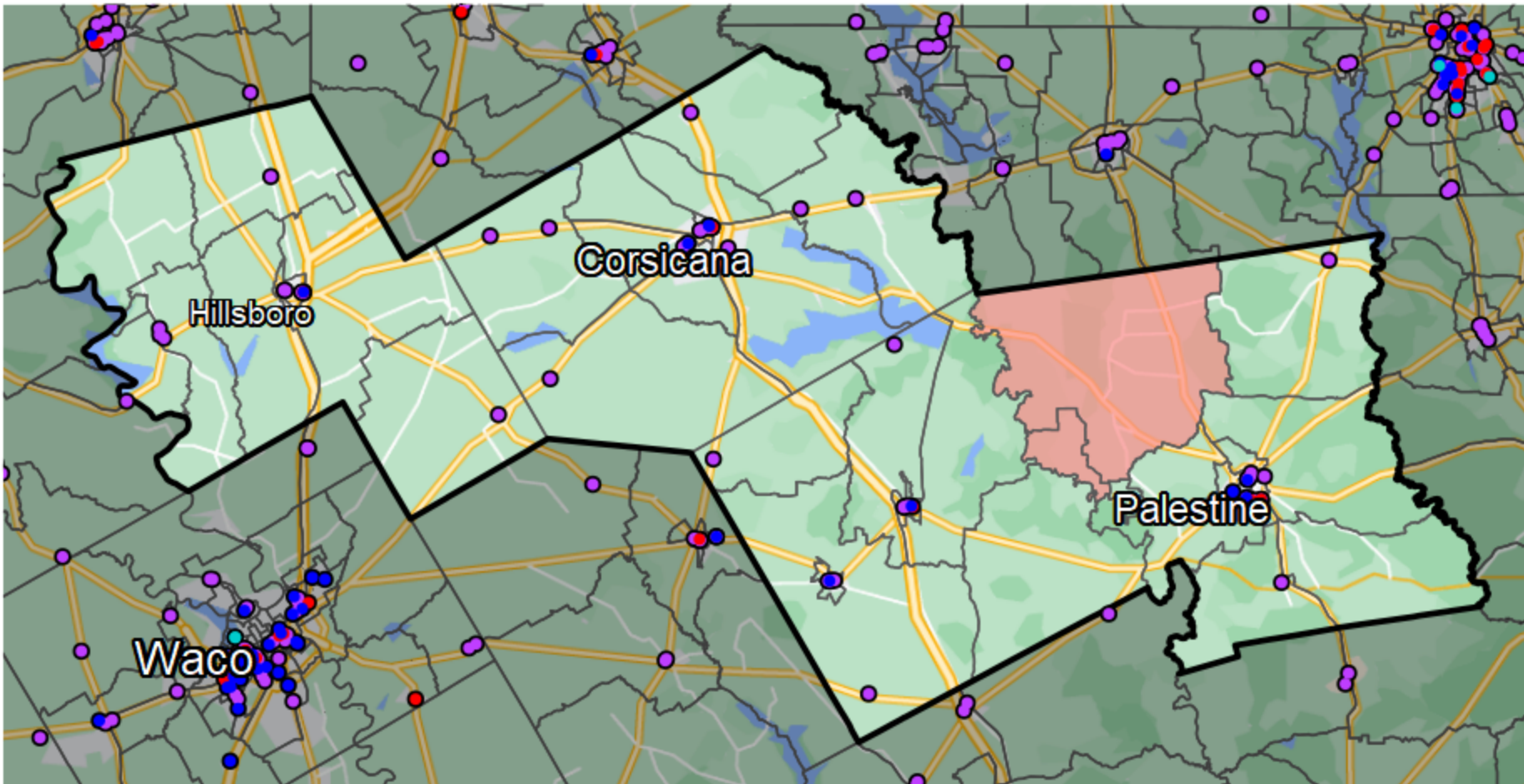


Texas - State House District 8



Banking Desert
No Branches within 10 Miles of Population Center

Financial Institutions

- Bank: 43
- Bank, Out-of-State: 5
- Credit Union: 9
- Credit Union, Out-of-State: 0

Sources: NCUA, FDIC, UW-Madison Population Lab, CDFI, US Census, Google Maps, CUNA