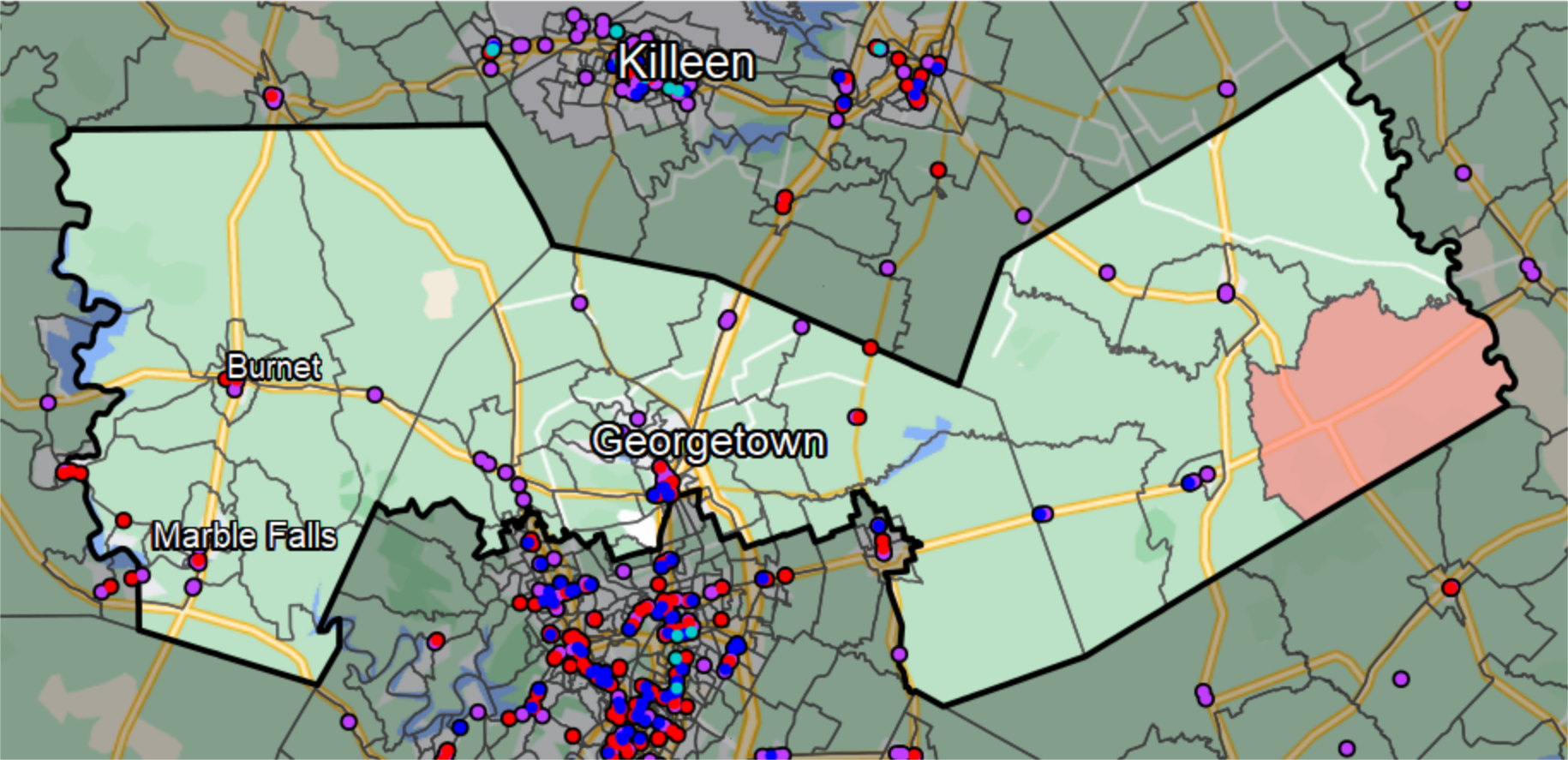


Texas - State House District 20



Financial Institutions

- Bank: 41
- Bank, Out-of-State: 21
- Credit Union: 7
- Credit Union, Out-of-State: 0

Banking Desert

- No Branches within 10 Miles of Population Center

Sources: NCUA, FDIC, UW-Madison Population Lab, CDFI, US Census, Google Maps, CUNA