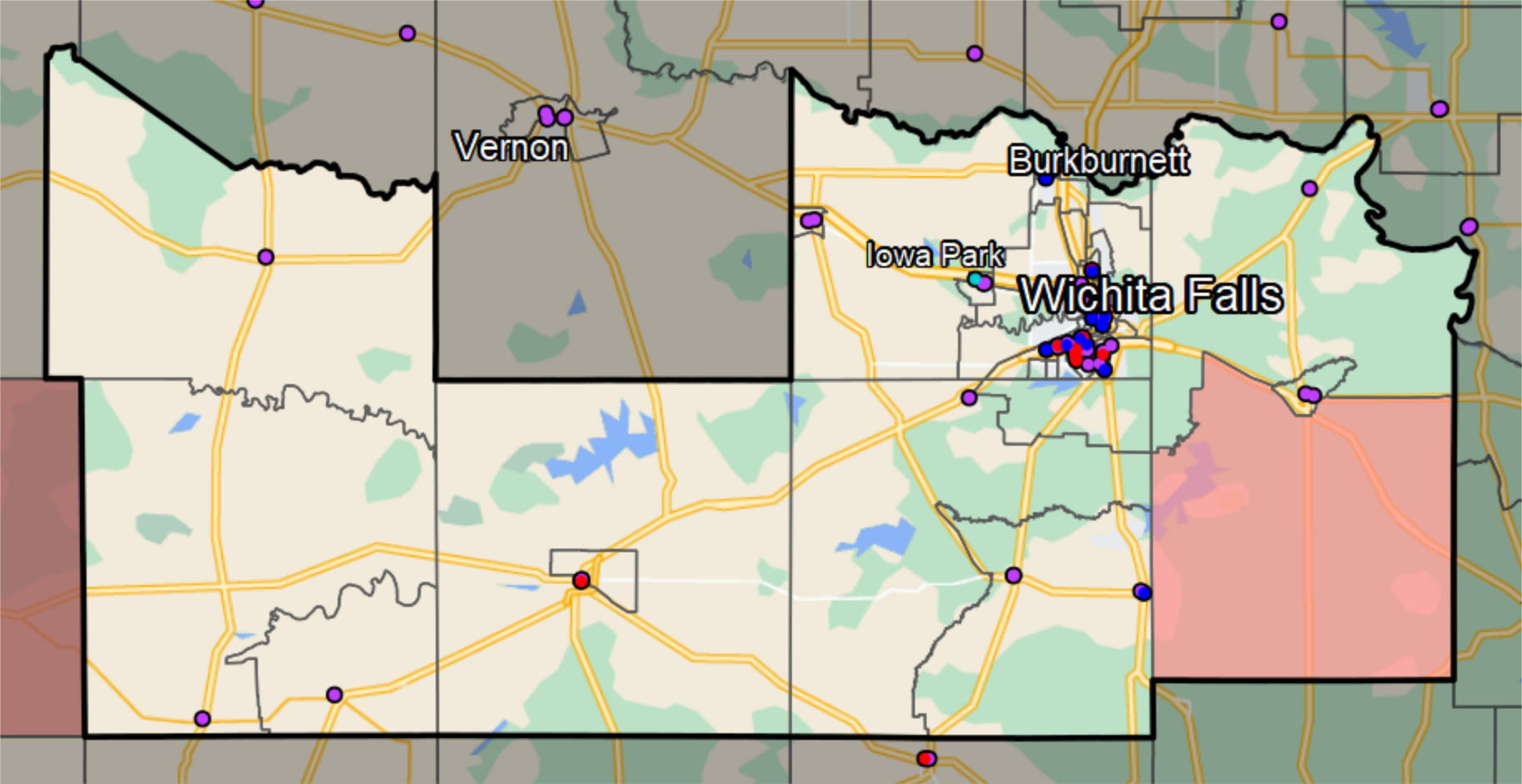


### Texas - State House District 69



**Banking Desert**  
No Branches within 10 Miles of Population Center

**Financial Institutions**

- Bank: 39
- Bank, Out-of-State: 9
- Credit Union: 12
- Credit Union, Out-of-State: 1

Sources: NCUA, FDIC, UW-Madison Population Lab, CDFI, US Census, Google Maps, CUNA